

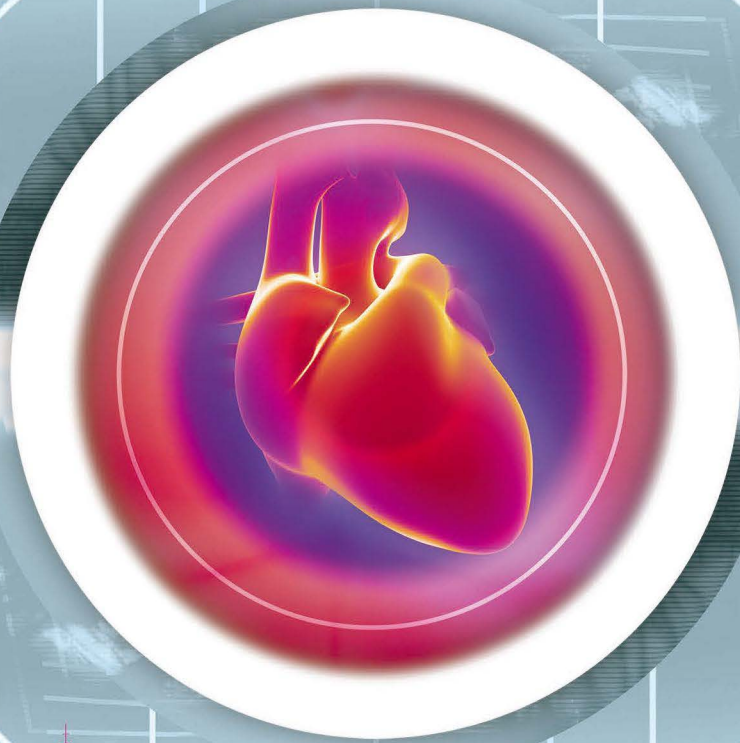
14TH ANNUAL MEETING OF THE EACVI CMR SECTION

EUROCMR

FLORENCE, ITALY
12-14 MAY

2016

FINAL PROGRAMME



www.escardio.org/EACVI



EACVI
EUROPEAN ASSOCIATION OF
CARDIOVASCULAR
IMAGING
A Registered Branch of the ESC



**EUROPEAN
SOCIETY OF
CARDIOLOGY®**

Main Sessions | Auditorium

Parallel Sessions | Sala Verde

BASEMENT



SECOND FLOOR



Thursday 12 May 2016

Basic Course I - <i>How to do CMR 1</i>	09:00 - 11:00	Advanced Course I - <i>T1 Mapping Session</i>
	<i>Coffee Break</i>	
INDUSTRY Showcase MEDTRON Moderated eCase I		
Basic Course II - <i>How to do CMR 2</i>	11:45 - 13:30	Advanced Course II - <i>4D Flow</i>
	<i>Lunch Break</i>	
INDUSTRY FACE-OFF (CIRCLE, MEDIS, PIE) Moderated ePoster I		
Advanced Course IV - <i>Congenital 1</i>	14:30 - 16:00	Advanced Course III - <i>CMR in Clinical practice</i>
	<i>Coffee Break</i>	
INDUSTRY Showcase SIEMENS Moderated eCase II		
INDUSTRY Sponsored Symposium MEDTRONIC	16:45 - 18:30	Advanced Course V - <i>Congenital 2</i>
KEYNOTE Lecture	18:30 - 19:00	

Friday 13 May 2016

Welcome Address	08:15 - 08:30	
Opening Plenary - <i>CMR: From research to clinical practice</i>	08:30 - 10:45	Technologist Session - <i>How to Get Good Images</i>
Best Oral Abstracts	<i>Coffee Break</i>	Didactic Case Session I - <i>Congenital</i>
Special Course: <i>Anatomy pieces and CMR images</i>		
Moderated ePoster II Oral Abstracts Featured QuickFire I		
Lecture Session I - <i>Controversies in clinical CMR: facts and myths</i>	11:30 - 12:40	Lecture Session VI - <i>Challenges & Opportunities of CMR in Europe</i>
INDUSTRY Sponsored Symposium BAYER	<i>Lunch Break</i>	CMR in Cardiomyopathy - <i>CMR WG Italian SC</i>
Lecture Session II - <i>Congenital</i>	13:45 - 16:10	Common Mistakes & Trouble Shooting
Lecture Session III - <i>Quantification in CMR</i>	<i>Coffee Break</i>	Oral Abstracts I QuickFire - <i>IHD & NIHD</i>
Special Course: <i>Fluid Dynamic principles in cardiology</i>		
INDUSTRY Break Session GE Moderated eCase III Oral Abstracts Featured QuickFire II		
CMR World Cup Competition - <i>England vs Germany</i>	17:00 - 18:55	Didactic Case Session II - <i>Fifty shades of gray</i>
Pro/Con Debate - <i>Tissue characterisation using CMR mapping</i>		Didactic Case Session III - <i>Multimodality cases ASCI & around the globe</i>
Welcome Drinks Meet & Greet Reception		

Saturday 14 May 2016

Breakfast Session - <i>HIT (Heart Imagers of Tomorrow)</i>	07:30 - 08:30	
Pro/Con Debate - <i>Coronary CT vs CMR</i>	08:30 - 10:25	Oral Abstracts II QuickFire - <i>Basic Science</i>
Lecture Session IV - <i>Valvular Heart Disease Assessment</i>	<i>Coffee Break</i>	Best Clinical Cases
Special Course: <i>Anatomy pieces and CMR images</i>		
Moderated ePoster III Oral Abstracts Featured QuickFire III		
Lecture Session V - <i>CMR to plan and guide procedures</i>	11:15 - 12:30	Didactic Case Session IV - <i>European Cases</i>
Closing Plenary - <i>Risk Stratification in Sudden Cardiac Death</i>	12:30 - 14:00	
Best Oral/Poster Abstract Awards		
Closing Remarks	12:30 - 18:30	

European CMR Exam

(Please note that exam candidates will be informed separately about registration and venue)

Dear Colleagues

Welcome once again to Florence for the 14th EuroCMR meeting, the annual CMR conference of the European Association of Cardiovascular Imaging (EACVI). The EuroCMR meeting has become the largest and most important CMR meeting in Europe with an increasing number of attendees, faculty and exhibitors from all over the world.

Overall the meeting is now 2.5 days long including joint sessions with the other sections of the EACVI, with the Society for Cardiovascular Magnetic Resonance (SCMR), the European Society of Cardiac Radiology (ESCR), the Association for European Paediatric and Congenital Cardiology (AEPC), and the Asian Society for Cardiovascular Imaging (ASCI) and more popular case sessions and debates.

The EuroCMR 2016 scientific program firmly focuses on the current clinical application of CMR and this year the programme includes several new features.

One exciting new feature is the achievement of CMR Level 1 Certification by attending a specific track during the meeting (see the programme for details).

The meeting kicks off with a series of pre-courses aimed at those relatively new to CMR but also at those wishing to refresh their basic CMR knowledge. Following on from the common basic pre-course for all participants, delegates can then select between a congenital and a general track during the following advanced pre-course.

The program will see a rapid fire abstract session and a face-off session where the post-processing software companies present their actual software in a live competition. There will be even more emphasis on 'meet the expert' and 'hands on' sessions to give delegates the opportunity to interact directly with the world's leading experts in the field.

At the end of the meeting a 'World Cup' session will relive the 50th anniversary of the 1966 World Cup final between England and Germany and offer a light-hearted but highly educational showdown to the 2016 EuroCMR meeting.

The EuroCMR App is now in its third year with more exciting features allowing you to even grade the faculty. We are always very grateful to all our sponsors, please take time to visit the industry exhibition and speak to the companies.

Once again, we are delighted to welcoming you to Florence at EuroCMR 2016!

Prof Holger Thiele
EuroCMR 2016 Programme Chair

Prof Bernhard Gerber & Dr Tomasz Miszalski-Jamka
EuroCMR 2016 Abstract Chairs

2 Programme at a Glance	37 Appendix I Oral Abstracts AGORA
4 Organisation	41 Appendix II Moderated ePOSTERS
6 EBAC Accreditation	45 Appendix III Moderated eCASES
8 General Information	49 Appendix IV Viewing ONLY Abstract Posters
15 Faculty	55 Appendix V Viewing ONLY Case Posters
16 Scientific Sessions Main & Parallel	59 Appendix VI Exhibitors' Directory
	63 Appendix VII Authors' List

Organising Committee

- Programme Chair** Prof. Holger Thiele | DE
- Abstract Chair Vice-Chair** Prof. Bernhard Gerber, FESC | BE
Dr. Tomasz Miszalski-Jamka | PL
- President EACVI** Prof. Gilbert Habib, FESC | FR
- CMR Section Executive Nucleus Members** **Chair** Prof. Sven Plein, FESC | UK
Vice-Chair Dr. Chiara Bucciarelli-Ducci, FESC | UK
Past Chair Prof. Heiko Mahrholdt, FESC | DE
- CMR Section Ordinary Nucleus Members** Dr. Francisco Alpendurada | UK
Dr. Claudia Christina Deluigi | DE
Dr. Steffen E. Petersen, FESC | UK
Prof. Holger Thiele | DE
- CMR Section Ex-Officio Nucleus Members** Dr. Oliver Bruder | DE
Prof. Herbert Frank, FESC | AT
Dr. Rolf Gebker | DE
Prof. Bernhard Gerber, FESC | BE
Prof. Massimo Lombardi, FESC | IT
Dr. Robert Manka | CH
Dr. Tomasz Miszalski-Jamka | PL
Dr. Manish Motwani, FESC | UK
Prof. Jeanette Schulz-Menger, FESC | DE
Assoc. Prof. Emanuela Valsangiacomo | CH
Dr. Mark Westwood, FESC | UK

Organisation European CMR Exam 2016

- European CMR Exam Board** **Chair** Dr. Mark Westwood, FESC | UK
Vice-Chair Dr. Ana Almeida | PT

- | | |
|-----------------------------------|--------------------------------------|
| Dr. Francisco Alpendurada UK | Dr. Alicia M Maceira ES |
| Dr. Redha Boubertakh UK | Dr. Robert Manka CH |
| Dr. John-Paul Carpenter UK | Dr. Robin Nijveldt NL |
| Dr. Andrea Codreanu LX | Dr. Joanna Petryka-Mazurkiewicz PL |
| Dr. Monica Deac CH | Dr. José F Rodríguez Palomares ES |
| Dr. Christina Deluigi CH | Dr. Dan Sado UK |
| Dr. Marco Gotte NL | Dr. Oliver Tann UK |
| Dr. Gabriela Guzman Martinez ES | Assoc. Prof. Norbert Wilke USA |
| Dr. Theo Karamitsos GR | |

Administrative Office

MEDCONVENT GmbH
Congress and Scientific Research Services

Kohlmarkt 16 | 1010 Wien | Austria

Phone: +43-676-498 41 51
Fax: +43-1-253 3033 3073

Email: office@medconvent.at
Web: www.medconvent.at

EACVI

European Association of Cardiovascular Imaging
of the European Society of Cardiology

The European Heart House
2035 Route des Colles - Les Templiers
06903 Sophia Antipolis - France

Email: eacvi@escardio.org
Web: www.escardio.org/EACVI

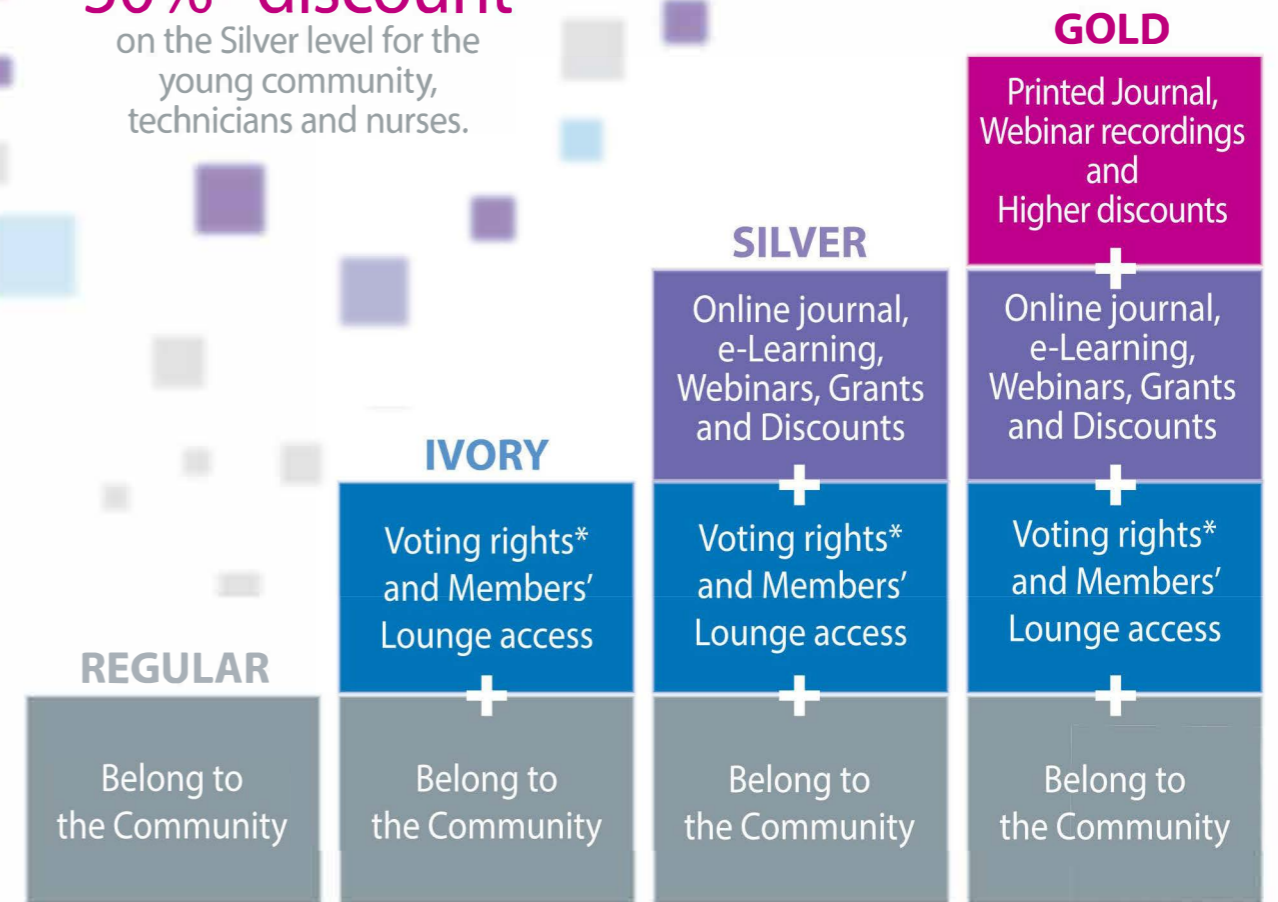
EUROPEAN ASSOCIATION OF CARDIOVASCULAR IMAGING (EACVI)



BE AN
EACVI MEMBER IN 2016
PICK YOUR
MEMBERSHIP LEVEL

50% discount

on the Silver level for the
young community,
technicians and nurses.



* For members from ESC countries

WE
ARE THE
ESC

I'm an EACVI member. We are the ESC

www.escardio.org/EACVI





Accreditation

The event EuroCMR 2016 is accredited by the European Board for Accreditation in Cardiology (EBAC) for 16 hours of External CME credits (day 1: 6 CME credits | day 2: 5 CME credits | day 3: 5 CME credits).

Each participant should claim only the actual hours that have been spent in the educational activity. EBAC works according to the quality standards of the European Accreditation Council for Continuing Medical Education (EACCME), which is an institution of the European Union of Medical Specialists (UEMS).

Disclosure

In compliance with EBAC/ EACCME guidelines, all speakers/chairpersons participating in this program have disclosed potential conflicts of interest that might cause a bias in the presentations.

The Organising Committee is responsible for ensuring that all potential conflicts of interest relevant to the program are declared to the audience prior to the CME activities.

EUROPEAN ASSOCIATION
OF CARDIOVASCULAR IMAGING (EACVI)

DISCOVER OUR

MEMBERSHIP OFFER

E-LEARNING PLATFORM

SCIENTIFIC PRODUCTS

JOURNAL

CONGRESSES & COURSES

HEART IMAGERS OF TOMORROW

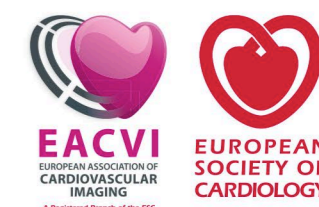
INTERNATIONAL NETWORK

MEMBERS GET SPECIAL BENEFITS AND DISCOUNTS

VISIT THE EACVI STAND

SPECIAL OFFER!
2016 Membership for only 60€*

www.escardio.org/EACVI



* This offer applies to the Silver level and is restricted to EuroCMR 2016 paying delegates.
Offer valid from 12/05/16 to 14/05/16 onsite only.

GENERAL INFORMATION



Venue Palazzo dei Congressi
Piazza Adua 1, 50123 Florence, Italy

Admission & Badges Your badge is required for admission to all scientific sessions and activities at EuroCMR 2016. Please make sure to wear your badge at all times.



Free WiFi Network Name: **EuroCMR WiFi**
Username: **eurocmr** | Password: **florence**

Level 1 Certification To receive your LEVEL 1 Certificate after the meeting, you must be pre-registered and prove your attendance at each of the lectures and courses of the dedicated track (look for the Level 1 label on the programme pages). Please make sure to scan your badge at the beginning and the end of each lecture and course of the dedicated track. The barcode scanner is located near the stage.



Special Courses Sala 9 Two new special courses are organised this year during the congress and access is done via pre-registration (<https://www.surveymonkey.com/r/GF5P9RC>) with no additional fee. Seats are very limited to favor interaction with the speakers. The courses will be held during breaks Friday morning and afternoon, and Saturday morning: **Cristina BASSO | Anatomy pieces and CMR images // Philip KILNER: Fluid dynamic principles in cardiology: interactive demonstration.** See details in programme.

Registration Desk & Opening Hours The registration/hospitality desk is located in SALA CLUB in the basement.

Wednesday 11 May:	15:00 - 18:30
Thursday 12 May:	07:30 - 19:00
Friday 13 May:	07:00 - 19:00
Saturday 14 May:	07:00 - 15:00

Exhibition Visit the EXHIBITION at PASSI PERDUTI located in the basement .

Thursday 12 May:	10:00 - 19:00
Friday 13 May:	09:00 - 19:00
Saturday 14 May:	09:00 - 14:00

EBAC CME Certificate Please submit the completed EBAC Evaluation Form (available in the EuroCMR APP) at the end of the meeting in order to receive the EBAC CME Certificate. Certificates will be available at the registration desk from 10:00-15:00 on Saturday 14 May.

Coffee Breaks Social Event Coffee break locations:
Exhibition hall PASSI PERDUTI and foyer next to SALA VERDE.

Meet & Greet Reception location:
GARDEN and LIMONAIA (weather permitting) or indoors.

ePOSTERS eCASES Poster Boards Abstracts and Cases will be available in the PASSI PERDUTI. Moderated ePOSTER and eCASES sessions are scheduled during coffee breaks from Thursday through Saturday (see program pages). All abstracts are also published online at the European Heart Journal-Cardiovascular Imaging's website for all attendees free to view. More information to be sent to attendees by email. Selected abstracts are also on display as printed posters on POSTER BOARDS at the BALLATOIO Galleria.

Session Recordings Sessions will be recorded and made available online for EACVI Silver and Gold members.



GENERAL INFORMATION

EuroCMR APP A special EuroCMR Free APP for IOS and ANDROID devices is available for all attendees. The APP will give you all the relevant information about the meeting, programme, faculty, industry, abstracts etc, and you have interactive features for inter-meeting communications, rating/voting functions for talks and presentations.

Speaker SERVICE CENTER All speakers have been invited to upload their presentations online prior to the meeting. Please check in with our IT partner CYIM in the Speaker Service Center behind the main stage in the basement auditorium. There you have the opportunity to update/edit your uploaded presentations, or upload it, if you have not done so yet. Please note, that uploads have to be done no later than 2 hours before the start of your presentation to guarantee availability on stage. Support technicians will be on duty at the SERVICE CENTER to assist you.

Service Center Opening hours:

Wednesday 11 May:	16:00 - 18:30
Thursday 12 May:	07:00 - 19:00
Friday 13 May:	07:00 - 19:00
Saturday 14 May:	07:00 - 14:00



European CMR Exam The CMR Exam will take place at the **Università degli Studi di Firenze** on Saturday 14 May 2016

Struttura Plesso Didattico Morgagni
Viale Morgagni 40-44, Florence

Please note, exam participation is subject to separate registration. Please bring your **exam registration confirmation and a picture ID** to the University to get access.

Registered Exam Participants have received detailed instructions. Please check with the registration desk, if not. There will be a SHUTTLE bus for exam participants. Meeting point: Main street entrance. First departure 11:30 (group 1), second departure 14:00 (group 2). No shuttle for the way back. If you don't take the shuttle to go to the exam, deadline to be at the university is 12:00 (group 1) or 14:00 (group 2).



The European Association of Cardiovascular Imaging, a registered branch of the ESC, is the leading international network in Cardiovascular Imaging (CVI) in the world. Over the years, EACVI has succeeded in creating a vibrant community of experts and leaders of tomorrow.

Mission To promote excellence in clinical diagnosis, research, technical development, and education in Cardiovascular Imaging in Europe.

Vision The EACVI is a unified community of experts and a knowledge provider in Cardiovascular Magnetic Resonance, Echocardiography, Nuclear Cardiology and Cardiac CT modalities. The EACVI has switched its vision from a single cardiovascular imaging technique entity to a patient care centric strategy.

Values The EACVI is committed to maintaining the highest standards of professional excellence in all Cardiovascular Imaging (CVI) modalities, by providing an innovative educational platform and being research focused to meet the needs and expectations at any stage of imagers' careers.

Structure



CMR Section The EACVI section on Cardiovascular Magnetic Resonance aims at being the representative transnational scientific organisation for physicians, scientists, and technologists who work in the field of Cardiovascular Magnetic Resonance (CMR). The purposes of the EACVI CMR section are to stimulate and disseminate the knowledge and the use of CMR through education, quality control, research, and training.

Stop by the EACVI stand in the Exhibition area to learn more about our activities.

Cardiovascular Magnetic Resonance EACVI e-learning course

Exclusive rates for EACVI members

Whether you are **new to CMR** or want to **deepen your knowledge** about CMR

- 9 world leading experts
- 10 CMR Tutorials
- **Practical** and comprehensive training in an engaging format
- From **indications** to scanning **techniques** and image **analysis**
- Aligned with the EACVI CMR **Core Syllabus**

Discover the exclusive CMR e-learning course
www.escardio.org/e-learning-cmr

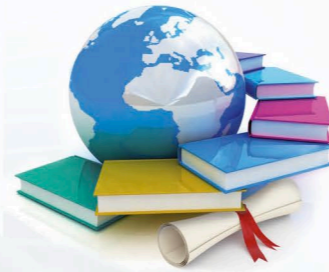


A vibrant community of over 6 000 members from all over the world

3 Congresses EuroCMR | EuroEcho-Imaging | ICNC

Education The EACVI Education Committee offers you the opportunity to keep developing your education in an efficient and practical way!

- Educational Courses
- Webinars
- Tool boxes
- Clinical Case Gallery
- eLearning programme on CMR **NEW!**



Individual Certification The EACVI provides the only European certification of professional excellence in Echocardiography (TEE, TTE & CHD) and Cardiac Magnetic Resonance (CMR) to certify both practical experience and knowledge in these specialties. A minimum of seven exams are organised each year.

EACVI Grants in Research & Training The EACVI offers young cardiologists working in the field of Cardiovascular Imaging (CVI) the opportunity to continue their medical training in a high standard clinical centre or university within an ESC Member Country other than their own. Yearly application deadline is 30 September.

Highlight Book The EACVI Highlight Book aims to provide a comprehensive overview of the Cardiovascular Imaging practice across Europe in order to:

- Offer suitable training programmes in CVI
- Help harmonise the practice of CVI in Europe
- Promote appropriate use of CVI

Over 50 ESC Member Countries currently participating! Download the electronic copy on the EACVI website!

Scientific Documents & Publications Over the years, the EACVI has published a significant number of documents. Some have been produced in collaboration with main players in the field and are published in the EHJ-CI Journal. The EACVI also produces textbooks, guides and booklets as a goldmine of information. Find all the EACVI 2015 publications in the Compendium 2016, for sale at the EACVI stand.

EHJ-CI European Heart Journal - Cardiovascular Imaging

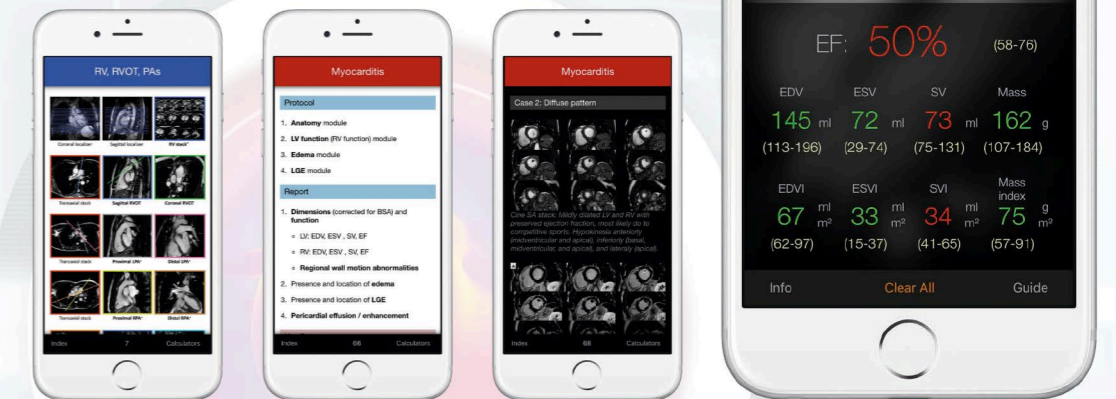
Official journal of the EACVI
Its impact factor went from 1.917 in 2008 to 4.105 in 2015



The first-ever CMR app
The CMR Pocket Guide now also for mobile devices

The clinical indications for Cardiovascular Magnetic Resonance (CMR) continue to expand. This mobile app was designed as a day-to-day companion for those new to CMR and for those looking for a quick reference guide during routine practice.

It provides all common clinical indications for CMR along with recommended acquisition methods and established normal ranges for CMR measurements.



For each indication the authors provide typical scan protocols, tips and tricks, guidelines for clinical example cases with detailed case descriptions.

Five calculators for heart chamber volumes and ECV complement the content.

If you own an iPhone, search for "CMR Pocket Guide" in the AppStore. For any other mobile device, please visit:

www.cmr-guide.com



What activities are waiting for you in Florence?

EACVI Stand Visit the EACVI stand, meet with the team and ask for all you need!

Special offer! 2016 membership for only 60€ for delegates*

- **NEW!** Coming soon: the EACVI eLearning Programme on CMR
10 tutorials covering the core syllabus
- **NEW!** Membership programme for 2016!
- Educational and Scientific opportunities
- European Heart Journal – Cardiovascular Imaging
- Congresses and courses
- Educational products at the shop
- Individual certification
- Young doctors initiatives (EACVI's Heart Imagers of Tomorrow)
- International networking and ambassadors opportunities

* This offer applies to the Silver level and is restricted to EuroCMR 2016 paying delegates. Offer valid from 12/05/2016 to 14/05/2016 onsite only.

Have a break in the Members' Lounge!

Members' Lounge Meet with colleagues, read emails or simply enjoy a cup of coffee in your exclusive area providing EACVI members with a break during their busy schedules!***

Opening hours:

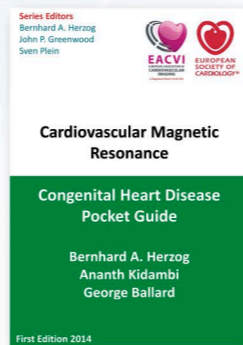
Thursday 12 May:	10:00 - 19:00
Friday 13 May:	09:00 - 19:00
Saturday 14 May:	09:00 - 14:00

*** Exclusive access offered to EACVI members for 2016

Pocket Guide

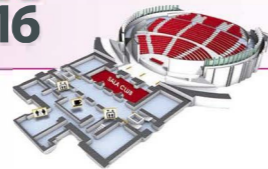
The series of CMR pocket guides covers general CMR, congenital CMR and MR physics as day-to-day companion for those new to CMR and for those looking for a quick reference guide in routine practice. The booklets give an overview of established normal ranges for CMR measurements, common acquisition methods and clinical indications for CMR. For each indication they provide typical scan protocols, tips and tricks and a guide for reporting.

They are available in hard copy or as free download under 'Publications' at www.escardio.org/EACVI



Zahra Alizadeh Sani | Teheran, Iran
 Mouaz Al-Mallah | Riyadh, Saudi Arabia
 Ana Almeida | Lisbon, Portugal
 Francisco Alpendurada | London, UK
 Giovanni Aquaro | Pisa, Italy
 Sonya Babu-Narayan | London, UK
 Cristina Basso | Padova, Italy
 Jeroen Bax | Leiden, Netherlands
 Colin Berry | Glasgow, UK
 Nino Bettencourt | Porto, Portugal
 Malenka Bissell | Oxford, UK
 Jan Bogaert | Leuven, Belgium
 Oliver Bruder | Essen, Germany
 Chiara Bucciarelli-Ducci | Bristol, UK
 Barbara Burkhardt | Zurich, Switzerland
 Peter Buser | Basel, Switzerland
 Gabriella Captur | London, UK
 Marcus Carlsson | Lund, Sweden
 John-Paul Carpenter | Poole, UK
 Carmen Chan | Hong Kong, HK
 Stephen Cheung | Hong Kong, HK
 Amedeo Chiribiri | London, UK
 Domenico Corrado | Padova, Italy
 Bernard Cosyns | Brussels, Belgium
 Erica Dall'Armellina | Oxford, UK
 Juliano De Lara Fernandes | Campinas, Brazil
 Victoria Delgado | Leiden, Netherlands
 Santo Dellegrottaglie | Naples, Italy
 Christina Deluigi | Bern, Switzerland
 Ingo Eitel | Lübeck, Germany
 Abdallah El Agha | Cairo, Egypt
 Mohammed Elbaz | Leiden, Netherlands
 Covadonga Fernandez-Golfín | Madrid, Spain
 Victor Ferrari | Philadelphia, USA
 Vanessa Ferreira | Oxford, UK
 Patricia Feuchter | London, UK
 Marianna Fontana | London, UK
 Marco Francone | Rome, Italy
 Matthias Friedrich | Heidelberg, Germany
 Oliver Gaemperli | Zurich, Switzerland
 Rolf Gebker | Berlin, Germany
 Bernhard Gerber | Leuven, Belgium
 Marco Götte | The Hague, Netherlands
 Julia Grapsa | London, UK
 John Greenwood | Leeds, UK
 Lars Grosse-Wortmann | Toronto, Canada
 Andrea Igren Guaricci | Bari, Italy
 Matthias Gutberlet | Leipzig, Germany
 Gilbert Habib | Marseille, France
 Einar Heiberg | Lund, Sweden
 Mark Hill | Oxford, UK
 Niall Keenan | London, UK
 Peter Kellman | Bethesda, USA
 Philip Kilner | London, UK
 Sari Kivisto | Helsinki, Finland
 Chris Lawton | Bristol, UK

Massimo Lombardi | Milano, Italy
 Alicia Maceira | Valencia, Spain
 Viviana Maestrini | Rome, Italy
 Heiko Mahrholdt | Stuttgart, Germany
 Lukasz Malek | Warsaw, Poland
 Robert Manka | Zurich, Switzerland
 Pier Giorgio Masci | Lausanne, Switzerland
 Sofia Mavrogeni | Athens, Greece
 Elisa McAlindon | Wolverhampton, UK
 Daniel Messroghli | Berlin, Germany
 James Moon | London, UK
 Manish Motwani | Los Angeles, USA
 Vivek Muthurangu | London, UK
 Eike Nagel | Frankfurt, Germany
 Luigi Natale | Rome, Italy
 Danilo Neglia | Pisa, Italy
 Koen Nieman | Rotterdam, Netherlands
 Robin Nijveldt | Amsterdam, Netherlands
 Jacopo Olivetto | Florence, Italy
 Tomas Palecek | Prague, Czech Republic
 Gianni Pedrizzetti | Trieste, Italy
 Patricia Pedrotti | Milano, Italy
 Dudley Pennell | London, UK
 Alessia Pepe | Pisa, UK
 Martina Perazzolo Marra | Padova, Italy
 Steffen Petersen | London, UK
 Stefan Piechnik | Oxford, UK
 Sven Plein | Leeds, UK
 Francesca Pluchinotta | San Donato Milanese, Italy
 Gianluca Pontone | Milano, Italy
 Oana-Andreea Popa | Bucharest, Romania
 Francesca Pugliese | London, UK
 Valentina Puntmann | Frankfurt, Germany
 Carlo Quattrocchi | Rome, Italy
 Frank Rademakers | Leuven, Belgium
 Kawal Rhode | London, UK
 Jonathan Rodrigues | Bristol, UK
 Jose Rodrigues Palomares | Barcelona, Spain
 Alberto Roghi | Milano, Italy
 Tobias Rutz | Lausanne, Switzerland
 Eric Schelbert | Pittsburgh, USA
 Silvia Schievano | London, UK
 Jeanette Schulz-Menger | Berlin, Germany
 Jürg Schwitter | Lausanne, Switzerland
 Sanjay Sharma | London, UK
 Orlando Simonetti | Columbus, Ohio
 Oliver Tann | London, UK
 Holger Thiele | Lübeck, Germany
 Martin Ugander | Stockholm, Sweden
 Emanuela Valsangiacomo | Zurich, Switzerland
 Albert van Rossum | Amsterdam, Netherlands
 Jos Westenberg | Leiden, Netherlands
 Mark Westwood | London, UK
 Michiel Winter | Amsterdam, Netherlands
 Kerstin Wustmann | Bern, Switzerland



Basic Course | How to do CMR 1

Chair Bernhard GERBER | Leuven, BE // Massimo LOMBARDI | Milano, IT

		#	LEVEL Track	
Principles of CMR physics: from proton to images	Stefan PIECHNIK Oxford, UK	1		09:00 - 09:12
CMR sequences made easy	Marco FRANCONI Rome IT	2		09:12 - 09:24
Safety of CMR (devices & contrast agents)	Massimo LOMBARDI Milano, IT	3		09:24 - 09:36
How to do: LV/RV function	Niall KEENAN London, UK	4		09:46 - 09:58
How to do: good late gadolinium enhancement	Jose P. RODRIGUEZ Barcelona, ES	5		09:58 - 10:10
How to do: good flow and valve imaging	Ana ALMEIDA Lisbon, PT	6		10:20 - 10:32
How to do: MR angiography (aorta, PV) and coronary imaging	Jos WESTENBERG Leiden, NL	7		10:32 - 10:44

Coffee Break | Exhibitions PASSI PERDUTI
Moderated eCASE I | Main ePoster Screen (see page 45 for details)
Industry Showcase I | MEDTRON | AGORA

11:00 - 11:45

17

Basic Course | How to do CMR 2

Chair Erica DALL'ARMESELLINA | Oxford, UK // Nuno BETTENCOURT | Porto, PT

		#	LEVEL Track	
How to do: oedema imaging	Pier Giorgio MASCI Lausanne, CH	18		11:45 - 11:58
How to do: stress CMR	Rolf GEBKER Berlin, DE	19		11:58 - 12:11
How to do: parametric mapping	Martin UGANDER Stockholm, SE	20		12:11 - 12:24
How to do: run a faster scan	J. DE LARA FERNANDES Campinas, BR	21		12:34 - 12:47
How to do: myocardial deformation imaging and analysis	Jan BOGAERT Leuven, BE	22		12:47 - 13:00
How to do: detect and eliminate artefacts	Luigi NATALE Rome, IT	23		13:00 - 13:13

Lunch Break | Exhibitions PASSI PERDUTI
Industry FACE-OFF Session | AUDITORIUM | Post Processing Volumes + Function + LGE

Chair Holger THIELE | Lübeck, DE // Sven PLEIN | Leeds, UK

CIRCLE	Silke FRIEDRICH Calgary, CA	24a		13:30 - 13:50
MEDIS	David HAUTEMANN Leiden, NL	24b		13:50 - 14:10
PIE Medical	Martin CHATROU n/a	24c		14:10 - 14:30

Moderated ePOSTER I | Main ePoster Screen (see page 41 for details)



09:00 - 11:00

	#
09:00 - 09:10	168
09:10 - 09:30	169
09:30 - 09:50	170
09:50 - 10:10	171
10:10 - 10:30	172
10:30 - 10:45	173

11:00 - 11:45

17

11:45 - 13:30

	#
11:45 - 12:00	174
12:05 - 12:15	175
12:15 - 12:30	176
12:30 - 12:45	177
12:45 - 13:05	178
13:05 - 13:20	179
13:20 - 13:30	180

13:30 - 14:30

	#
13:30 - 13:50	24a
13:50 - 14:10	24b
14:10 - 14:30	24c

Advanced Course I | T1-Mapping Session

Chair James MOON | London, UK // Vanessa FERREIRA | Oxford, UK

09:00 - 09:10	Peter KELLMAN Bethesda, USA	Overview of current knowledge mapping
09:10 - 09:30	Daniel MESSROGHLI Berlin, DE	Clinical scenarios where T1-mapping makes sense
09:30 - 09:50	Colin BERRY Glasgow, UK	ECV for imaging myocardial infarction
09:50 - 10:10	Vanessa FERREIRA Oxford, UK	T1 and ECV in focal scar in ischaemic and non-ischaemic cardiomyopathies
10:10 - 10:30	Erik SCHELBERT Pittsburgh, USA	T1-mapping and ECV as an outcome predictor - latest results
10:30 - 10:45	Marianna FONTANA London, UK	T1-mapping in amyloid

Coffee Break | Exhibitions PASSI PERDUTI
Moderated eCASE I | Main ePoster Screen (see page 45 for details)
Industry Showcase I | MEDTRON | AGORA

Advanced Course II | 4D Flow

Chair Jos WESTENBERG | Leiden, NL // Philipp KILNER | London, UK

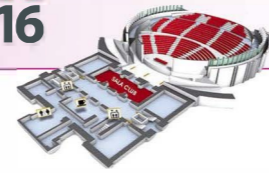
11:45 - 12:00	Malenka BISSELL Oxford, UK	Current trends in 4D flow CMR towards clinical application
12:05 - 12:15	Einar HEIBERG Lund, SE	Recent developments in 4D flow acquisition approaches and analysis tools
12:15 - 12:30	Marcus CARLSSON Lund, SE	Pathological blood flow phenomena in the great thoracic arteries with 4D flow CMR
12:30 - 12:45	Mohammed ELBAZ Leiden, NL	Intracardiac blood flow with 4D flow CMR
12:45 - 13:05	Gianni PEDRIZETTI Trieste, IT	4D flow with Ultrasound particle image velocimetry
13:05 - 13:20	Philip KILNER London, UK	4D flow with CMR
13:20 - 13:30	All	Debate: 4D flow CMR versus Ultrasound particle image velocimetry

Lunch Break | Exhibitions PASSI PERDUTI
Industry FACE-OFF Session | AUDITORIUM | Post Processing Volumes + Function + LGE

Chair Holger THIELE | Lübeck, DE // Sven PLEIN | Leeds, UK

13:30 - 13:50	Silke FRIEDRICH Calgary, CA	CIRCLE
13:50 - 14:10	David HAUTEMANN Leiden, NL	MEDIS
14:10 - 14:30	Martin CHATROU n/a	PIE Medical

Moderated ePOSTER I | Main ePoster Screen (see page 41 for details)



14:30 - 16:00

LEVEL
Track

Advanced Course III

CMR in clinical practice - common differential diagnoses

Chair Ana ALMEIDA | Lisbon, PT // Heiko MAHRHOLDT | Stuttgart, DE

		#	
Differential diagnosis in heart failure	Mouaz AL-MALLAH Riyadh, SA	37	14:30 - 14:42
Differential diagnosis between constriction and restriction: beyond the septal bounce	Peter BUSER Basel, CH	38	14:42 - 14:54
Differential diagnosis of the hypertrophied heart: role of advanced CMR methods	Francisco ALPENDURADA London, UK	39	14:54 - 15:06
Differential diagnosis of right ventricular dilatation: a systematic approach	John-Paul CARPENTER Poole, UK	40	15:13 - 15:25
Differential diagnosis of cardiac masses	Manish MOTWANI Los Angeles, USA	41	15:25 - 15:37
A systematic approach to detecting extracardiac findings	Jonathan ROGRIGUES Bristol, UK	42	15:37 - 15:49

Coffee Break | Exhibitions PASSI PERDUTI

Moderated eCASE II | Main ePoster Screen *(see page 45 for details)*

Industry Showcase I | SIEMENS | AGORA

16:00 - 16:45

52

Industry Sponsored Symposium | MEDTRONIC

All you want to know about MRI in pacemakers and ICDs

Chair Chiara BUCCIARELLI-DUCCI | Bristol, UK // Jürg SCHWITTER | Lausanne, CH

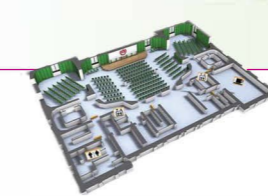
		#	
Welcome and session objectives	Chiara BUCCIARELLI-DUCCI Bristol, UK	53	16:45 - 17:05
Implantable cardiac devices and MRI: potential risks, scanning of non-MRI and MRI conditional devices	Marco GÖTTE The Hague, NL	54	17:05 - 17:25
MRI conditional devices: from testing to clinical experience	Gianluca PONTONE Milano, IT	55	17:25 - 17:45
Scanning device patients in clinical practice: organisation and cases	Jürg SCHWITTER Lausanne, CH	56	17:45 - 18:15

KEYNOTE Lecture

Chair Holger THIELE | Lübeck, DE

		#	
The double-edged sword of reperfusion in myocardial infarction: the role of CMR	Albert VAN ROSSUM Amsterdam, NL	57	18:30 - 19:00

14:30 - 16:00



Advanced Course IV | Congenital 1

Chair Emanuela VALSANGIACOMO | Zurich, CH // Lars GROSSE-WORTMANN | Toronto, CA

		#	
14:30 - 14:45	Tobias RUTZ Lausanne, CH	181	State-of-the-art protocols for congenital heart disease
14:45 - 15:00	Sonya BABU-NARAYAN London, UK	182	When to refer the GUCH patient to CMR
15:07 - 15:22	Oliver TANN London, UK	183	Intracardiac shunts
15:22 - 15:37	Jan BOGAERT Leuven, BE	184	Disease of the aorta and the pulmonary arteries
15:37 - 15:52	Jürg SCHWITTER Lausanne, CH	185	New frontiers in anatomical imaging

16:00 - 16:45

52

Coffee Break | Exhibitions PASSI PERDUTI

Moderated eCASE II | Main ePoster Screen *(see page 45 for details)*

Industry Showcase I | SIEMENS | AGORA

16:45 - 18:30

Jointly organized with
ESC Working Group GUCH & EAPC

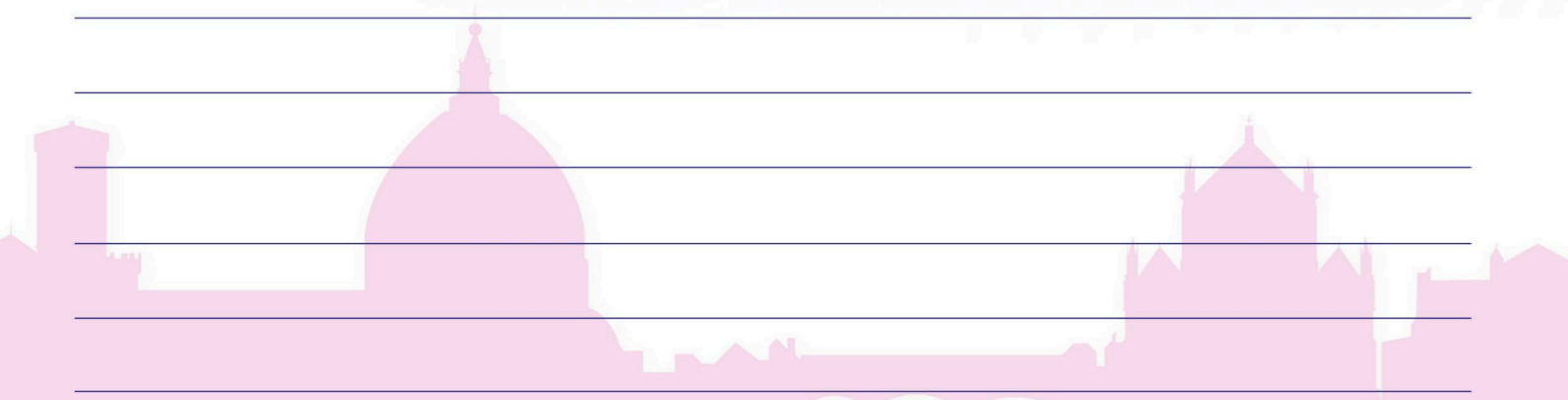
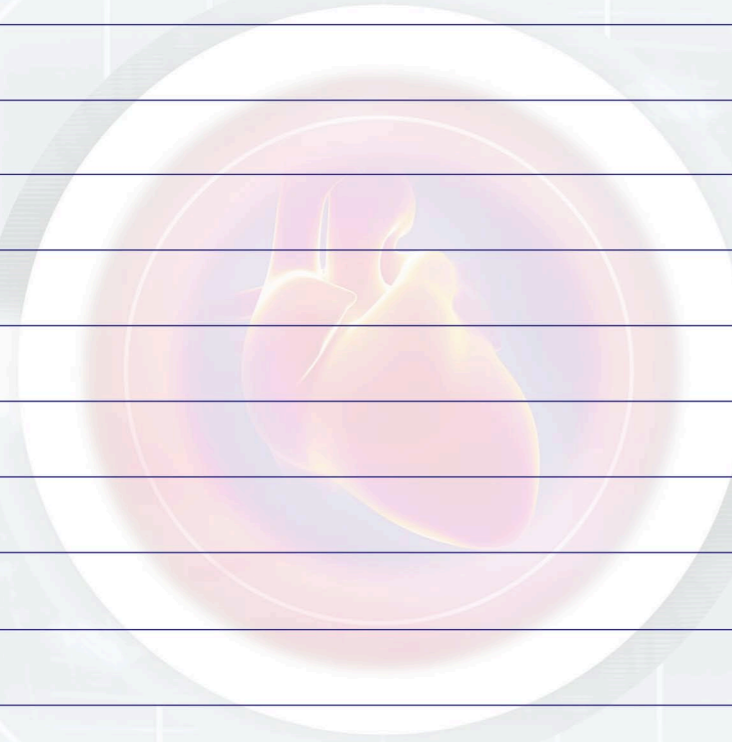
		#	
16:45 - 17:00	Sonya BABU-NARAYAN London, UK	186	Tetralogy of Fallot
17:00 - 17:15	Emanuela VALSANGIACOMO Zurich, CH	187	Transposition of the great arteries
17:15 - 17:30	Lars GROSSE-WORTMANN Toronto, CA	188	Single ventricle physiology
17:37 - 17:52	Amedeo CHIRIBIRI London, UK	189	Anomalous origin of coronaries and Kawasaki
17:52 - 18:07	F. PLUCHINOTTA San Donato Milanese, IT	190	Right compared with left ventricular structure and function
18:07 - 18:22	Vivek MUTHURANGU London, UK	191	CMR assessment of pulmonary hypertension in GUCH

Advanced Course V | Congenital 2

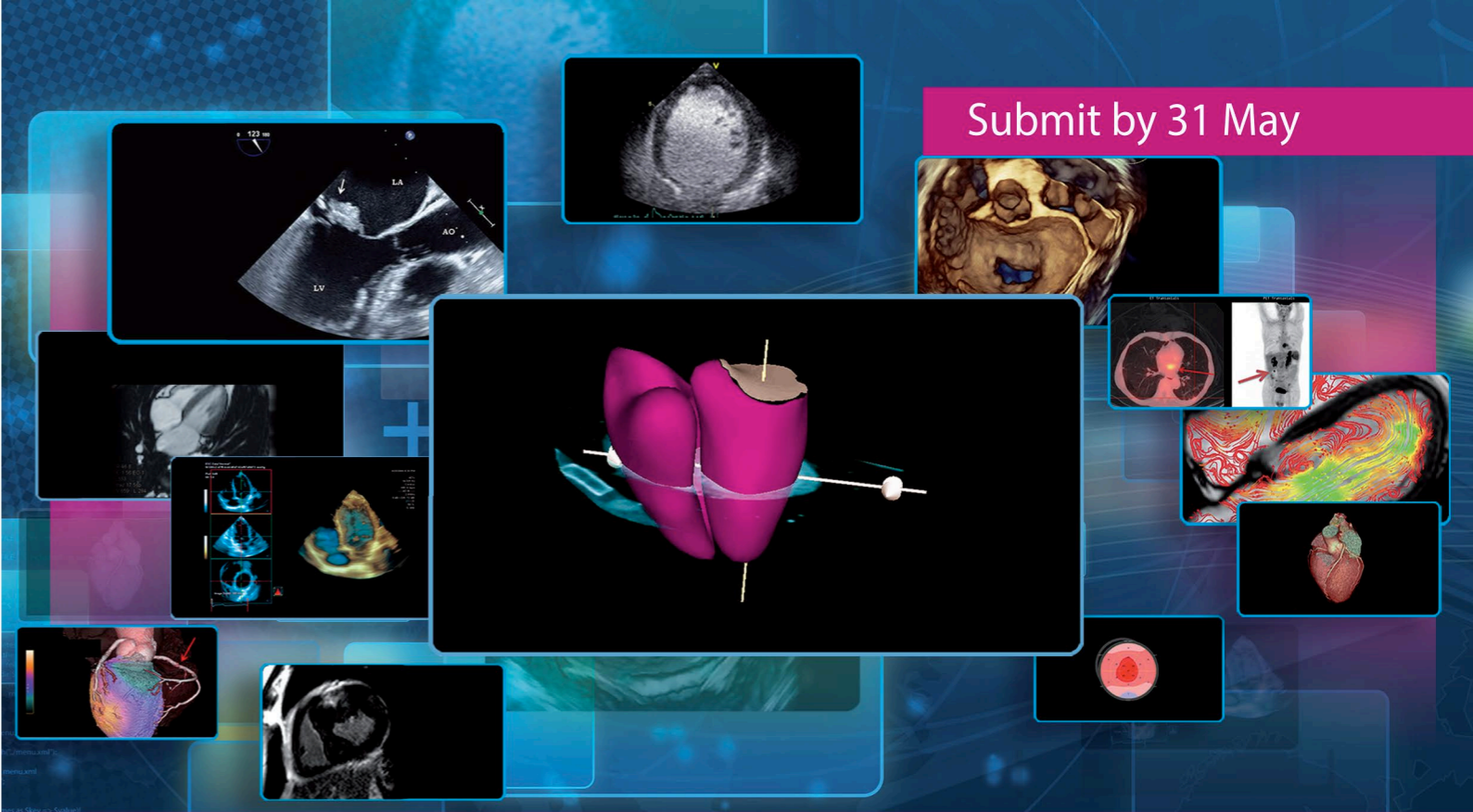
Chair Sonya BABU-NARAYAN | London, UK // Oliver TANN | London, UK

NOTES

EUROCMR
2016



Submit by 31 May



Leipzig - Germany
7-10 December 2016

EuroEcho Imaging 2016

EDITION

20th Annual Meeting of the European Association of Cardiovascular Imaging, a registered branch of the ESC, in cooperation with the German Working Group of Echocardiography.

Important Deadlines

- Clinical case submission **18 May 2016**
- Abstract submission **31 May 2016**
- Early registration **30 September 2016**
- Late registration **31 October 2016**

#EuroEcho
www.escardio.org/EACVI





WELCOME Address

Welcome address	Sven PLEIN Leeds, UK	# 58a	08:15 - 08:20
EACVI	Gilbert HABIB Marseille, FR	# 58b	08:20 - 08:25
EuroCMR 2016 - what's new?	HolgerTHIELE Lübeck, DE	# 59	08:25 - 08:30

Opening Plenary
CMR: From research to clinical practice

Chair Sven PLEIN | Leeds, UK // Gilbert HABIB | Marseille, FR

When choice becomes a challenge: How to choose the best test for each patient	Jeroen BAX Leiden, NL	# 60	08:30 - 08:45
CMR in current ESC guidelines	Dudley PENNELL London, UK	# 61	08:45 - 09:00
What is needed for the next set of guidelines?	Frank RADEMAKERS Leuven, BE	# 62	09:00 - 09:15
CMR at the extreme: super fast imaging	James MOON London, UK	# 63	09:15 - 09:30

BEST Oral Abstracts

Chair Bernhard GERBER | Leuven, BE // Steffen PETERSEN | London, UK

#1575: Extracellular volume associates with outcomes more strongly than native or post-contrast myocardial T1	Thomas TREIBEL London, UK	# 64	09:45 - 09:52
#1507: Cardiac magnetic resonance measured extracellular volume independently predicts adverse outcome in heart failure with preserved ejection fraction	Franz DUCA Vienna, AT	# 65	09:55 - 10:02
#1457: Cardiac MRI under percussive ventilation: A new promising technique	Jürg SCHWITTER Lausanne, CH	# 66	10:05 - 10:12
#1644: Histological validation of cardiac magnetic resonance for the evaluation of myocardial fibrosis after heart transplantation in children	Seiko IDE Toronto, CA	# 67	10:15 - 10:22
#1493: First-pass perfusion reserve index in paediatric patients with arterial switch for transposition of great arteries	Francesca RAIMONDI Paris, FR	# 68	10:25 - 10:32
#1652: Myocardial fibrosis is prevalent in obstructive sleep apnea and associated with hospitalization for heart failure or death	Yaron FRIDMAN Pittsburgh, USA	# 69	10:35 - 10:42

Coffee Break | Exhibitions PASSI PERDUTI

Moderated ePOSTER II | Main ePoster Screen (see page 41 for details)

Oral ABSTRACTS Featured QuickFire I | AGORA | Miscellaneous (see page 37 for details)

Special COURSE I | SALA 9 | Anatomy pieces and CMR images by Cristina BASSO (pre-registration required)

Lecture Session I
Controversies in clinical CMR: facts and myths

Chair Marcus CARLSSON | Lund, SE // Vanessa FERREIRA | Oxford, UK

Exercise CMR for physiological assessment - ready for prime time?	Lon SIMONETTI Columbus, USA	# 88	11:30 - 11:45
Does CMR have a role in rheumatological disease?	Sofia MAVROGENI Athens, GR	# 89	11:45 - 12:00
Left ventricular non-compaction, myocardial recesses and other difficult differentials	Gilbert HABIB Marseille, FR	# 90	12:00 - 12:15
Cardiovascular effects of recreational drugs - role of CMR	Alicia Maceira Valencia, ES	# 91	12:15 - 12:30

08:15 - 08:30

#	
# 58a	08:15 - 08:20
# 58b	08:20 - 08:25
# 59	08:25 - 08:30

08:30 - 09:45

#	LEVEL Track
# 60	08:30 - 08:45
# 61	08:45 - 09:00
# 62	09:00 - 09:15
# 63	09:15 - 09:30

09:45 - 10:45

#	
# 64	09:45 - 09:52
# 65	09:55 - 10:02
# 66	10:05 - 10:12
# 67	10:15 - 10:22
# 68	10:25 - 10:32
# 69	10:35 - 10:42

10:45 - 11:30

11:30 - 12:40

#	LEVEL Track
# 88	11:30 - 11:45
# 89	11:45 - 12:00
# 90	12:00 - 12:15
# 91	12:15 - 12:30



08:30 - 09:45

#	
# 192	08:30 - 08:45
# 193	08:45 - 09:00
# 194	09:00 - 09:15
# 195	09:15 - 09:30

09:45 - 10:45

#	LEVEL Track
# 196	09:45 - 09:50
# 197	09:51 - 09:56
# 198	09:57 - 10:02
# 199	10:03 - 10:08
# 200	10:09 - 10:14
# 201	10:15 - 10:20
# 202	10:21 - 10:26
# 203	10:27 - 10:32
# 204	10:33 - 10:38
# 205	10:39 - 10:44

10:45 - 11:30

11:30 - 12:40

#	
# 206	11:30 - 11:37
# 207	11:38 - 11:45
# 208	11:45 - 12:00
# 209	12:00 - 12:15
# 210	12:15 - 12:30

Jointly organized with ESCR

Patricia FEUCHTER London, UK
Elisa McALINDON Wolverhampton, UK
Patrizia PEDROTTI Milano, IT
Jonathan RODRIGUES Bristol, UK

Kerstin WUSTMANN Bern, CH
Oliver TANN London, UK
Barbara BURKHARDT Zurich, CH
Michiel WINTER Amsterdam, NL
Filippa VALENTE Barcelona, ES
withdrawn
Anna BARITUSSIO Bristol, UK
Maria José CALERO RUEDA Valdemoro, ES
Monika ARZANAUSKAITE London, UK
Zeeshan LAKHANI Kerala, IN

Technologist Session
How to get good images

Chair Chris LAWTON | Bristol, UK // Mark WESTWOOD | London, UK

Basic CMR imaging - tips and tricks
CMR tissue characterization
Stress perfusion imaging (adenosine & dobutamine)
CMR in hypertension

Didactic Case Session I | Congenital

Chair Francesca PLUCHINOTTA | San Donato Milanese, IT // Daniel MESSROGHLI | Berlin, DE

Case 1
Case 2
Case 3
Case 4
#158: A rare case of severe retrograde flow in ascending aorta
#82: A rare case of marked stroke volume difference
#116: Atriovent canal defect
#109: A case of a giant right coronary artery with a fistulous connection to SVC
#119: Paediatric arrhythmogenic right ventricular dysplasia

Coffee Break | Exhibitions PASSI PERDUTI

Moderated ePOSTER II | Main ePoster Screen (see page 41 for details)

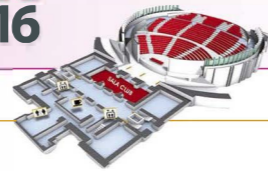
Oral ABSTRACTS Featured QuickFire I | AGORA | Miscellaneous (see page 37 for details)

Special COURSE I | SALA 9 | Anatomy pieces and CMR images by Christina BASSO (pre-registration required)

Lecture Session VI
Challenges and opportunities of CMR in Europe

Chair Chiara BUCCIARELLI-DUCCI | Bristol, UK // Matthias GUTBERLET | Leipzig, DE

Update on EuroCMR Registry
Update on ESCR Registry
CMR between cardiology and radiology: how to strike the balance
Top 10 indications in CMR
Fusion imaging: PET-MR and SPECT-CT



Lunch Break | Exhibitions PASSI PERDUTI

12:40 - 13:45

Lunch Break Session

Industry Sponsored Symposium | BAYER

The current and future use of contrast agents in CMR

Chair Eike NAGEL | Frankfurt, DE // Sven PLEIN | Leeds, UK

Topic	Speaker	#	Time
Where contrast impacts on diagnosis in CMR	Jeanette SCHULZ-MENGER Berlin, DE	92	12:40 - 12:55
CMR induced DNA damage: never mind the quantity, what is the quality?	Mark HILL Oxford, UK	93	12:55 - 13:10
Gd deposits in the brain	Carlo QUATTROCCHI Rome, IT	94	13:10 - 13:25
Low contrast dose CMR protocols	Eike NAGEL Frankfurt, DE	95	13:25 - 13:40

Lecture Session II | Congenital

Session dedicated to Dr Sohrab Fratz

Advanced technologies in CHD - fancy or useful? When to use in clinical practice

Chair Emanuela VALSANGIACOMO | Zurich, CH // Francesca PLUCHINOTTA | San Donato Milanese, IT

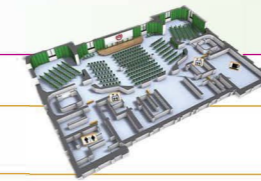
Topic	Speaker	#	Time
When real-time imaging is useful in congenital patients	Vivek MUTHURANGU London, UK	96	13:45 - 14:00
LGE and T1 mapping: applications in CHD	Lars GROSSE-WORTMANN Toronto, CA	97	14:00 - 14:15
4D flow: applications in CHD	Malenka BISSELL Oxford, UK	98	14:15 - 14:30
3D printing: how it can help diagnosis and management planning	Silvia SCHIEVANO London, UK	99	14:30 - 14:45

Lecture Session III

Quantification in CMR - where it makes a difference to patient care

Chair Victor FERRARI | Philadelphia, USA // Holger THIELE | Lübeck, DE

Topic	Speaker	#	Time
Quantifying flow and valve regurgitation	Philip KILNER London, UK	100	15:00 - 15:15
Quantifying oedema: T2w mapping, SSFP or T1/T2 mapping?	Erica DALL'ARMELLINA Oxford, UK	101	15:15 - 15:30
Quantifying iron load: T2* mapping versus T1 in thalassaemia	Alessia PEPE Pisa, IT	102	15:30 - 15:45
Quantifying ischaemia: can it be done in clinical routine?	Matthias FRIEDRICH Heidelberg, DE	103	15:45 - 16:00



12:40 - 13:45

Lunch Break | Exhibitions PASSI PERDUTI

12:40 - 13:45

Time	#
12:40 - 12:50	211
12:50 - 13:00	212
13:00 - 13:10	213
13:10 - 13:20	214
13:20 - 13:30	215

13:45 - 15:00

Time	#
13:45 - 14:00	216
14:00 - 14:15	217
14:15 - 14:30	218
14:30 - 14:45	219

15:00 - 16:10

Time	#
15:00 - 15:04	220
15:05 - 15:09	221
15:10 - 15:14	222
15:15 - 15:19	223
15:20 - 15:24	224
15:25 - 15:29	225
15:30 - 15:34	226
15:35 - 15:39	227
15:40 - 15:44	228
15:45 - 15:49	229
15:50 - 15:54	230
15:55 - 15:59	231
16:00 - 16:04	232
16:05 - 16:09	233

Cardiac Magnetic Resonance in Cardiomyopathy

A session of the CMR WG of the ITALIAN Society of Cardiology

Chair Giovanni Donato AQUARO | Pisa, IT // Marco FRANCONI | Rome, IT

Time	Speaker	Topic
12:40 - 12:50	Andrea Igoren GUARICCI Bari, IT	Additional prognostic value of CMR in HCM
12:50 - 13:00	Giovanni Donato AQUARO Pisa, IT	Arrhythmogenic right ventricular cardiomyopathy: the 'Italian' disease
13:00 - 13:10	Santo DELLEGROTtagLIE Naples, IT	CMR in myocarditis: the Italian multicenter registry for myocarditis (ITAMY)
13:10 - 13:20	Alessia PEPE Pisa, IT	Role of CMR in pediatric patients with Thalassemia
13:20 - 13:30	Gianluca PONTONE Milano, IT	Prognostic benefit of CMR over TTE in primary prevention ICD therapy

Common mistakes & trouble shooting

Chair Nuno BETTENCOURT | Porto, PT // Luigi NATALE | Rome, IT

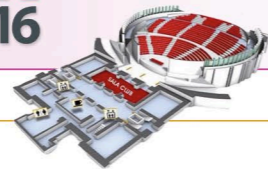
Time	Speaker	Topic
13:45 - 14:00	Heiko MAHRHOLDT Stuttgart, DE	Common mistakes with tissue characterization
14:00 - 14:15	Martin UGANDER Stockholm, SE	Common mistakes in T1/T2 mapping
14:15 - 14:30	Robert MANKA Zurich, CH	Common mistakes in perfusion CMR
14:30 - 14:45	Sonya BABU-NARAYAN London, UK	Common mistakes in congenital imaging

Oral ABSTRACTS | QuickFire

Ischemic and non-ischemic heart disease

Chair Santo DELLEGROTtagLIE | Naples, IT // Robin NIJVELDT | Amsterdam, NL

Time	Speaker	Topic
15:00 - 15:04	Angela SUSANA Padova, IT	#1496: Myocardial substrates underlying early ventricular arrhythmias in ST-elevation acute myocardial infarction: the role of cardiac magnetic resonance
15:05 - 15:09	Claudia CAMAIONI Bordeaux, FR	#1416: Cardiac magnetic resonance predicts atrial fibrillation occurrence in patients with hypertrophic cardiomyopathy.
15:10 - 15:14	Sebastian BOHNEN Hamburg, DE	#1469: T1 and T2 mapping cardiovascular magnetic resonance to monitor inflammatory activity in patients with myocarditis
15:15 - 15:19	Mohammed KHANJI London, UK	#1480: Impact of electronic coaching on cardiovascular risk reduction in a high-risk primary prevention population - A cardiovascular magnetic resonance sub-study
15:20 - 15:24	Sebastian HILBERT Leipzig, DE	#1598: Anatomical and functional evaluation of postinterventional pulmonary vein stenosis by magnetic resonance imaging
15:25 - 15:29	Kaatje GOETSCHALCKX Leuven, BE	#1364: Reduced infarct-adjacent wall thickening and impaired restperfusion in the area at risk of successfully reperfused acute myocardial infarction.
15:30 - 15:34	Camilla CALVIERI Rome, IT	#1580: Correlation between circulating microRNA 29 and diffuse myocardial fibrosis, assessed by T1 mapping, in patients affected by non ischemic dilative cardiomyopathy.
15:35 - 15:39	Sebastian J. REINSTADLER Innsbruck, AT	#1435: Association of smoking with myocardial injury and clinical outcome in patients undergoing mechanical reperfusion for ST-elevation myocardial infarction
15:40 - 15:44	Viviana MAESTRINI Rome, IT	#1640: Assessing the risk of late cardiotoxicity in low risk breast cancer survivors receiving contemporary anthracycline treatment: a 6 year 100 patient study.
15:45 - 15:49	Stephanie JAMES Dublin, IRL	#1511: Risk stratification in sarcoidosis: Incidence of cardiac sarcoidosis in individuals diagnosed with extra-cardiac disease by cardiovascular magnetic resonance
15:50 - 15:54	Rachel BASTIAENEN London, UK	#1334: Patterns of late gadolinium enhancement in Brugada syndrome
15:55 - 15:59	Anna REID Liverpool, UK	#1591: Detailed left atrial assessment in Anderson Fabry disease
16:00 - 16:04	Antonio Matteo AMADU Bristol, UK	#1634: Role of cardiac magnetic resonance in the diagnosis of ARVC/D mimics
16:05 - 16:09	Gianluca PONTONE Milano, IT	#1321: Comparison of transthoracic echocardiography versus cardiac magnetic for implantable cardioverter defibrillator therapy in primary prevention strategy dilated cardiomyopathy patients



Coffee Break | Exhibitions PASSI PERDUTI
Moderated eCASE III | Main ePoster Screen (see page 41 for details)
Oral ABSTRACTS Featured QuickFire II | Miscellaneous | AGORA (see page 37 for details)
Special COURSE II | SALA 9 | Fluid dynamic principles in cardiology: interactive demonstration by Philip KILNER (pre-registration required)

16:10 - 16:55

INDUSTRY Break Session
GE Healthcare

Chair Sven PLEIN | Leeds, UK

Towards a comprehensive cardiac MR approach

7D cardiac imaging: from research to clinical application

Martin JANICH | Buc, FR

Jean-Francois PAUL | Paris, FR

16:20 - 16:50

104 16:20 - 16:30

105 16:30 - 16:50

CMR World Cup Competition - A EuroCMR/SCMR event
England vs Germany - the 1966 World Cup Final revisited

Referees Victor FERRARI | Philadelphia, USA // Steffen PETERSEN | London, UK

Jointly organized with SCMR

Team ENGLAND

James MOON | London, UK

John GREENWOOD | Leeds, UK

Dudley PENNELL | London, UK

Team GERMANY

Oliver BRUDER | Essen, DE

Jeanette SCHULZ-MENGER | Berlin, DE

Matthias FRIEDRICH | Heidelberg, DE

17:00 - 18:10

#

124

125

126

127

128

129

Pro/Con Debate

Tissue characterisation using CMR mapping techniques: ready for prime time?

Chair Stefan PIECHNIK | Oxford, UK // Daniel MESSROGHLI | Berlin, DE

PRO: ready for prime time

CONTRA: not ready for prime time

Valentina PUNTMANN | Frankfurt, DE

James MOON | London, UK

18:15 - 18:50

#

130

131

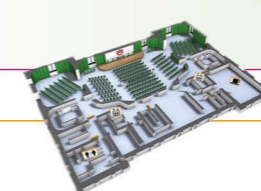
LEVEL Track

18:15 - 18:30

18:30 - 18:45

Meet & Greet RECEPTION | Welcome Drinks | GARDEN & LIMONAIA
(weather permitting)

18:50



Coffee Break | Exhibitions PASSI PERDUTI
Moderated eCASE III | Main ePoster Screen (see page 41 for details)
Oral ABSTRACTS Featured QuickFire II | Miscellaneous | AGORA (see page 37 for details)
Special COURSE II | SALA 9 | Fluid dynamic principles in cardiology: interactive demonstration by Philip KILNER (pre-registration required)

16:10 - 16:55

17:00 - 18:10

LEVEL Track

17:00 - 17:15

17:15 - 17:30

17:30 - 17:45

17:45 - 18:00

#

234

235

236

237

Viviana MAESTRINI | Rome, IT

Gabi CAPTUR | London, UK

Covadonga FERNANDEZ-GOLFIN | Madrid, ES

Martina PERAZZOLO MARRA | Padova, IT

Didactic Case Session II
Fifty shades of gray: challenging cases of overlapping phenotypes

Chair Oliver BRUDER | EsseN, DE // Cristina BASSO | Padova, IT

HCM/DCM or athletic heart?

LV non compaction or normal variant

Hypertensive heart or HCM?

ARVC or normal variant?

18:15 - 18:50

18:15 - 18:21

18:23 - 18:29

18:31 - 18:37

18:39 - 18:45

18:47 - 18:53

#

238

239

240

241

242

Jointly organised with ASCI

Didactic Case Session III
Multimodality cases: ASCI and around the globe: where CMR made a difference

Chair Stephen CHEUNG | Hongkong, HK // Victoria DELGADO | Leiden, NL

Mouaz AL-MALLAH | Riyadh, SA

Zahra ALIZADEH SANI | Teheran, IR

Abdalla EL AGHA | Cairo, ET

Carmen CHAN | Hongkong, HK

Hind OUGNOU | Rabat, MA

Saudi Arabia

Iran

Egypt

ASCI

156: Pulmonary artery hydatid cyst diagnosed by MRI

18:50

Meet & Greet RECEPTION | Welcome Drinks | GARDEN & LIMONAIA
(weather permitting)

WEBINARS

in Cardiovascular Imaging

Provided by European Association of Cardiovascular Imaging (EACVI)

Expand
your knowledge
from anywhere

- e-learning tools
- Online assessment
- Clinical Cases
- Professional development
- International experts



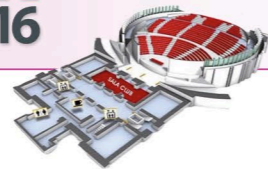
Don't miss

11+ sessions in 2016

FREE for Silver and Gold EACVI members

Learn more and register
www.escardio.org/EACVI





07:30 - 08:30

Breakfast Session

HIT (Heart Imagers of Tomorrow) - a career in CMR

Chair Julia GRAPSA | London, UK // Francisco ALPENDURADA | London, UK

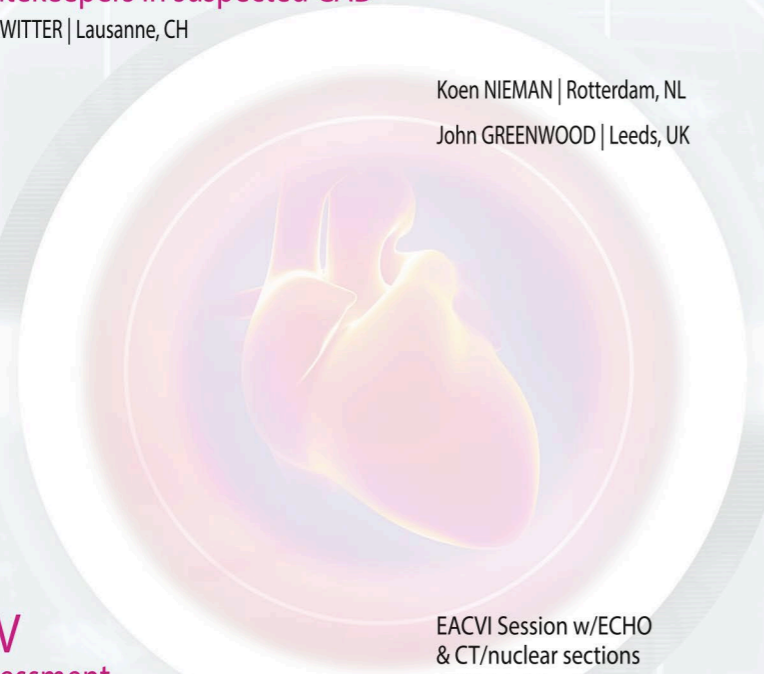
CMR and imaging training in Europe and the US	Manish MOTWANI Los Angeles, USA	132	07:30 - 07:40
Taking on CMR as a later career choice	Alberto ROGHI Milano, IT	133	07:40 - 07:50
Training and certification in CMR: what's new?	Mark WESTWOOD London, UK	134	07:50 - 08:00
Roundtable Discussion PANEL Julia GRAPSA London, UK // Manish MOTWANI Los Angeles, USA // Steffen PETERSEN London, UK Mark WESTWOOD London, UK // Pier Giorgio MASCI Lausanne, CH // Nuno BETTENCOURT Porto, PT // Lukasz MALEK Warsaw, PL Alicia MACEIRA Valencia, ES // Gianluca PONTONE Milano, IT			

Pro/Con Debate

Coronary CT vs CMR as gatekeepers in suspected CAD

Chair Danilo NEGLIA | Pisa, IT // Jürg SCHWITTER | Lausanne, CH

PRO: Coronary CT	Koen NIEMAN Rotterdam, NL	135	08:30 - 08:45
CONTRA: CMR	John GREENWOOD Leeds, UK	136	08:45 - 09:00



Lecture Session IV
Valvular heart disease assessment

Chair Carmen CHAN | Hongkong, HK // Bernard COSYNS | Brussels, BE

LV function in aortic valve disease: prognostic relevance and multi-modality assessment	Bernard COSYNS Brussels, BE	137	09:15 - 09:30
Multiparametric CMR in aortic valve disease	Bernhard GERBER Leuven, BE	138	09:30 - 09:45
CMR/CT to guide TAVI	Francesca PUGLIESE London, UK	139	09:45 - 10:00
Is CMR superior to echo in assessing the mitral valve?	Victoria DELGADO Leiden, NL	140	10:00 - 10:15

EACVI Session w/ECHO & CT/nuclear sections
ASCI Joint Session

09:15 - 10:25

#			
---	--	--	--



08:30 - 09:10

08:30 - 08:34	243	Jean-Francois FONTAINE Auxerre, FR
08:35 - 08:39	244	Alwin ZWEERINK Amsterdam, NL
08:40 - 08:44	245	Heerajnarain BULLUCK London, UK
08:45 - 08:49	246	Pankaj GARG Sheffield, UK
08:50 - 08:54	247	Jonathan RODRIGUES Bristol, UK
08:55 - 08:59	248	Tarik HAFYANE Montreal, CA
09:00 - 09:04	249	withdrawn
09:05 - 09:10	250	Haifa AMUTAIRI London, UK

09:15 - 10:25

09:15 - 09:20	251	Pier Giorgia MASCI Lausanne, CH
09:22 - 09:27	252	Luca OLIVOTTI n/a
09:29 - 09:34	253	Anca Rezeda FLORIAN Münster, DE
09:36 - 09:41	254	Ibolya CSECS Budapest, HU
09:43 - 09:48	255	Zeinabou CHABARNOUX Rabat, MA
09:50 - 09:55	256	Amrit LOTA London, UK
09:57 - 10:02	257	Rashid AL UMAIRI n/a
10:04 - 10:09	258	Noelia BOUZAS Santiago de Compostela, ES
10:11 - 10:16	259	Katia Devorha MENACHO MEDINA London, UK
10:18 - 10:23	260	Alessandra SCATTEIA Bristol, UK

Oral ABSTRACTS II QuickFire
Basic Science

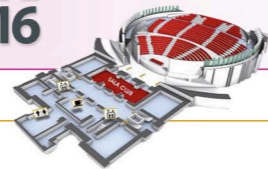
Chair Amedeo CHIRIBIRI | London, UK // Christina DELUIGI | Bern, CH

#1393: Validation of aortic in-vitro strain measurement by magnetic resonance imaging with realistic abdominal aortic aneurism phantom
#1474: A novel method of segment length tracking providing regional strain measures from standard CMR cine images in CRT candidates
#1623: T1 mapping can quantify the area-at-risk and infarct size - no need or T2 mapping or conventional LGE imaging in acute STEMI at 1.5T
#1373: Reliability and reproducibility of trans-valvular flow measurement by 4D flow magnetic resonance imaging in acute myocardial infarct patients: two centre study.
#1588: Insights into hypertensive heart disease phenotypes: spectrum of myocyte, interstitial and vascular changes by cardiovascular MRI.
#1412: Myocardial partition coefficient of gadolinium: A comparison between patients with acute myocarditis, chronic infarction and healthy volunteers
#1386: A comparison of circumferential strain results from multiple software packages in healthy subjects

Best Clinical Cases

Chair Christina DELUIGI | Bern, CH // Jose RODRIGUES PALOMARES | Barcelona, ES

#71: A concealed carcinoid cardiac metastasis uncovered by comprehensive CMR-based tissue characterization and multimodality imaging
#69: Left ventricle pseudoaneurysm
#73: Two hearts beating as one for more than a quarter of century
#148: Cardiac manifestation of Erdheim-Chester disease followed up by cardiac magnetic resonance imaging
#155: Giant left circumflex coronary artery with double saccular aneurysm mimicking bi-atrial hydatid cyst: how cardiac MRI made the difference
#112: CMR characteristics of cardiac lymphoma
#67: Eosinophilic granulomatosis with polyangitis involving the heart: Cardiac magnetic resonance imaging
#93: Fused PET/MRI for early diagnosis and therapy monitoring in aortitis
#100: Early diagnosis and treatment of acute eosinophilic myocarditis by cardiac magnetic resonance
#124: Relaxometry CMR Imaging in Early Diagnosis of Anderson-Fabry Disease



10:25 - 11:10

Coffee Break | Exhibition PASSI PERDUTI

Moderated ePOSTER III | Main ePoster Screen (see page 41 for details)

Oral ABSTRACTS Featured QuickFire III | Miscellaneous | AGORA (see page 37 for details)

Special COURSE II | SALA 9 | Anatomy pieces and CMR images by Cristina BASSO (pre-registration required)

Lecture Session V

CMR to plan and guide procedures

Chair Peter BUSER | Basel, CH // Victoria DELGADO | Leiden, NL

- CMR to guide ICD and CRT implantation
- Using CMR and CT in AF ablation
- Using CMR and other methods to guide coronary intervention
- CT and CMR to guide/assess transcatheter valve therapy

EACVI Session w/ECHO
& CT/nuclear sections

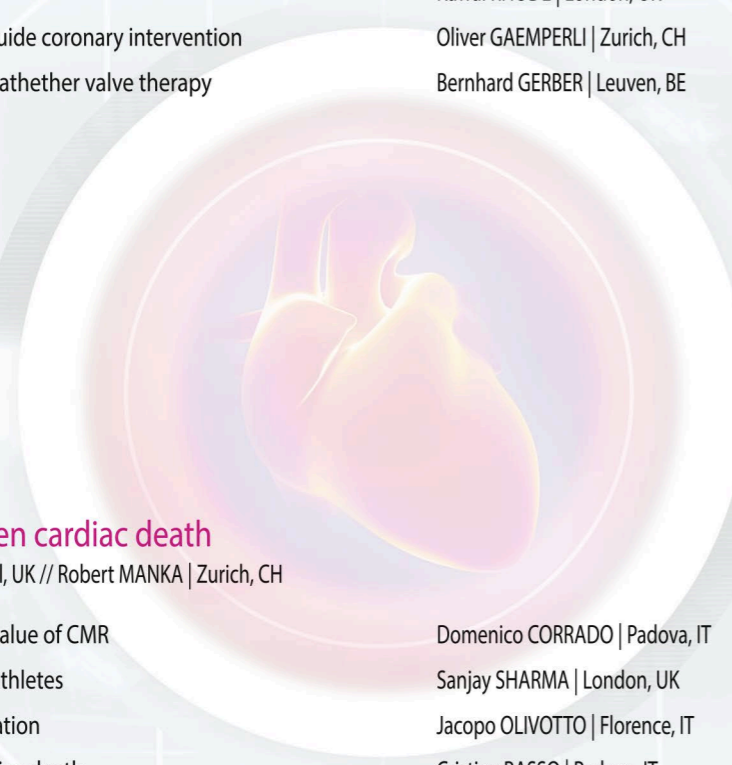
- Robin NIJVELDT | Amsterdam, NL
- Kawal RHODE | London, UK
- Oliver GAEMPERLI | Zurich, CH
- Bernhard GERBER | Leuven, BE

11:15 - 12:25

#



- 159 11:15 - 11:30
- 160 11:30 - 11:45
- 161 11:45 - 12:00
- 162 12:00 - 12:15



Closing Plenary

Risk stratification in sudden cardiac death

Chair Chiara BUCCIARELLI-DUCCI | Bristol, UK // Robert MANKA | Zurich, CH

- ARVC risk stratification: the added value of CMR
- Role of CMR in risk stratification of athletes
- Where CMR fits in HCM risk stratification
- Imaging substrates of sudden cardiac death

- Domenico CORRADO | Padova, IT
- Sanjay SHARMA | London, UK
- Jacopo OLIVOTTO | Florence, IT
- Cristina BASSO | Padova, IT

12:30 - 13:40

#



- 163 12:30 - 12:45
- 164 12:45 - 13:00
- 165 13:00 - 13:15
- 166 13:15 - 13:30

Best Poster/Oral Abstract & Case AWARDS

Chair Holger THIELE | Lübeck, DE // Bernhard GERBER | Leuven, BE

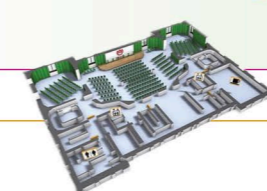
Closing Remarks

Closing remarks

Holger THIELE | Lübeck, DE

13:50 - 13:55

- 167 13:50 - 13:55



10:25 - 11:10

Coffee Break | Exhibition PASSI PERDUTI

Moderated ePOSTER III | Main ePoster Screen (see page 41 for details)

Oral ABSTRACTS Featured QuickFire III | Miscellaneous | AGORA (see page 37 for details)

Special COURSE II | SALA 9 | Anatomy pieces and CMR images by Cristina BASSO (pre-registration required)

11:15 - 12:25

#

- 11:15 - 11:21 261
- 11:22 - 11:28 262
- 11:29 - 11:35 263
- 11:36 - 11:42 264
- 11:43 - 11:49 265
- 11:50 - 11:56 266
- 11:57 - 12:03 267
- 12:04 - 12:10 268
- 12:11 - 12:17 269
- 12:18 - 12:24 270

- Tomas PALECEK | Prague, CZ
- Nuno BETTENCOURT | Porto, PT
- Oana-Andreea POPA | Bucharest, RO
- Lukasz MALEK | Warsaw, PL
- Sari KIVISTO | Helsinki, FI
- Carmen OLMOS | Madrid, ES
- Andrea BARISON | Pisa, IT
- Silvia PICA | London, UK
- Alice NIERO | Padova, IT
- Sigita GLAVECKAITE | Vilnius, LT

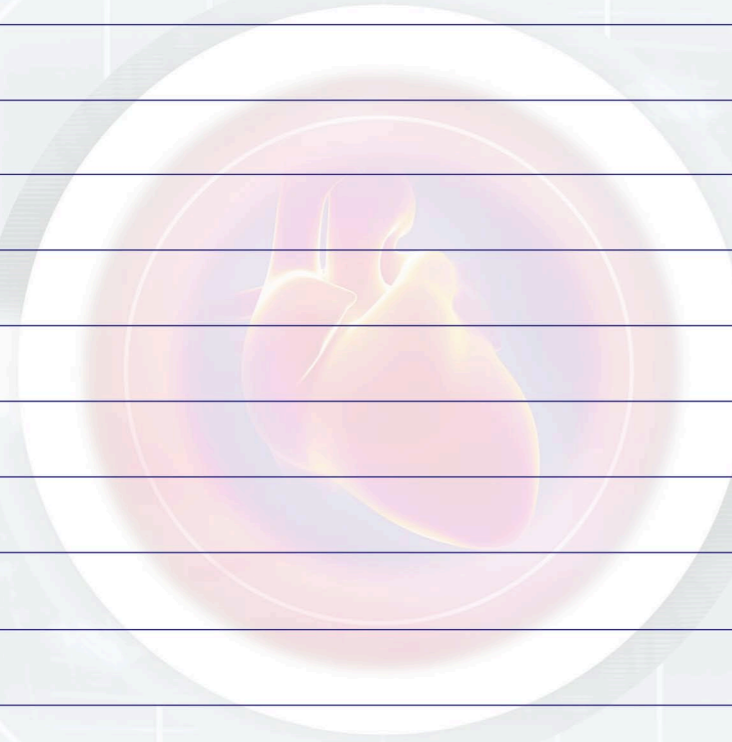
Didactic Case Session IV

My most challenging cases - European CMR societies

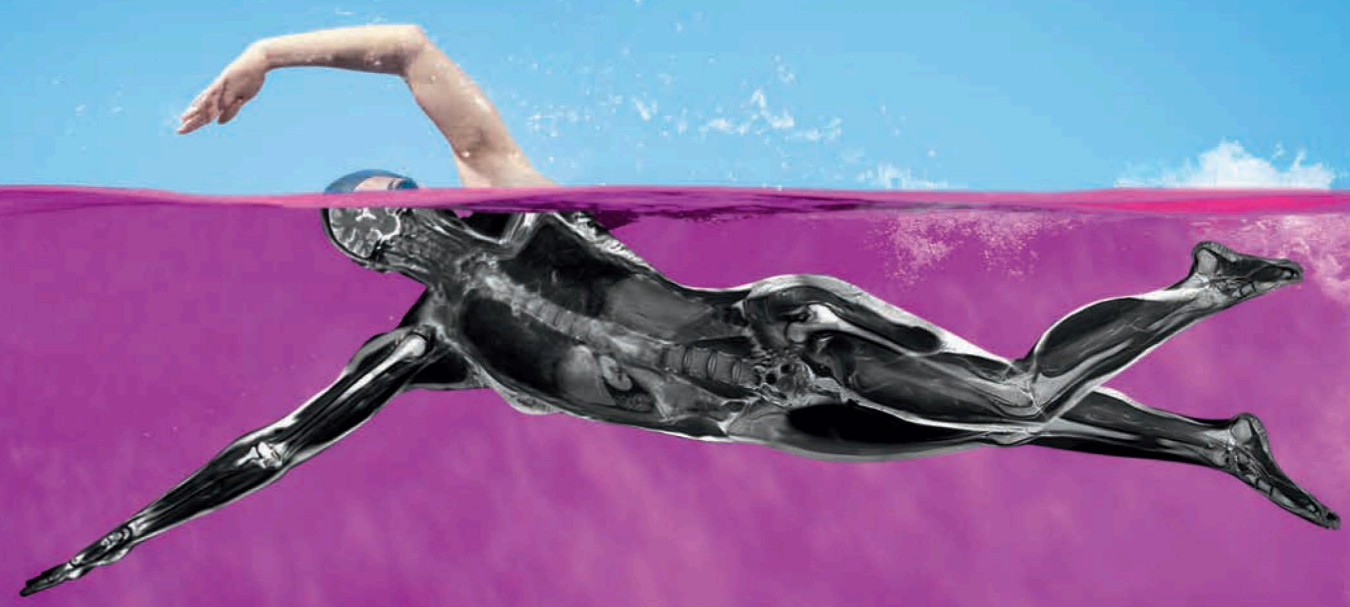
Chair Francisco ALPENDURADA | London, UK // Jan BOGAERT | Leuven, BE

- Case 1 from CZECH REPUBLIC
- Case 2 from PORTUGAL
- Case 3 from ROMANIA
- Case 4 from POLAND
- Case 5 from FINLAND: Open chest needle biopsy of left ventricle in the evaluation of suspected focal myocardial inflammation
- #94: Acute coronary syndrome in an 18-year old patient: the key role of multimodality imaging in diagnosis and prognosis
- #81: Don't miss the diagnosis: clinical importance of follow-up scans to detect cardiomyopathies with delayed phenotypic expression
- #75: Giant LV pseudo-aneurysm or true aneurysm?
- #92: A postinfarction myocardial rupture with normal coronary arteries: role of cardiac magnetic resonance
- #79: Acquired Gerbode defect - a rare complication of myocardial infarction





1) Frenzel J, et al. Stability of gadolinium-based magnetic resonance imaging contrast agents in human serum at 37 degrees C. Invest Radiol 43, 12, 817-828 (2008). 2) Voth M, et al. Safety of gadobutrol - Experience from Clinical Trials and Post-marketing Surveillance. Invest Radiol 40, 11, 715-724 (2005). 3) Rohrer M, et al. Comparison of magnetic properties of MRI contrast media solutions at different magnetic field strengths. Invest Radiol 40, 11, 715-724 (2005). 4) Tombach B, et al. Comparison of 1.0 M gadobutrol and 0.5 M gadopentate dimeglumine-enhanced MRI in 471 patients with known or suspected renal lesions: results of a multicenter, single-blind, interindividual, randomized clinical phase III trial. Eur Radiol 2008; 18(6):1550-1556. et al.: Value of 1.0 M gadolinium chelates: review of preclinical and clinical data on gadobutrol. Eur Radiol 2002; 12(6):1550-1556.



The Power of Contrast

NOW
with
Whole Body
Label

Gadovist® 1.0:
mezzo di contrasto per
tutti i distretti corporei

- ◆ Composto macrociclico: classe con la più alta stabilità¹
- ◆ Comprovata sicurezza ed efficacia diagnostica^{2,4,5}
- ◆ Massimo accorciamento del T1 per una eccellente qualità delle immagini^{3,4,5}

Gadovist® 1.0
Gadobutrol



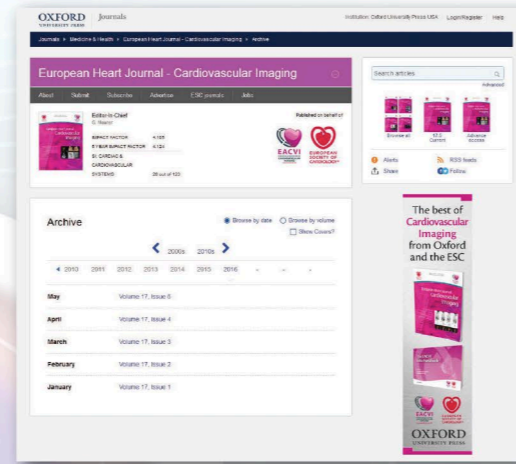
European Heart Journal - Cardiovascular Imaging

is pleased to partner with EuroCMR 2016 to bring you the 2016 meeting abstracts.

Please visit the journal's archive page

<http://ehjcmi.oxfordjournals.org/content/by/year/2016>

to access the latest content from this meeting



The following ABSTRACTS have been selected for

Featured QuickFire Presentations

during coffee breaks on Friday and Saturday in the AGORA (exhibition hall).

All ABSTRACTS will always be available for viewing on all ePOSTER screens throughout the meeting, through the EuroCMR APP, and online at the EHJ-CI archive pages (<http://ehjcmi.oxfordjournals.org/content/by/year/2016>)

Only the main author/presenter of an abstract is mentioned with each abstract in this appendix. All authors are listed online with their abstracts in a separate authors' list in the EHJ-CI archive pages.



For easy, intuitive and comprehensive data analysis of MR images



CAAS MRV

Functional Perfusion
Viability
Tissue Mapping (T1, T2, T2*)

2D Flow

CAAS MR 4D Flow

Vendor independent
Visualization: Streamlines Pathlines Vector fields

2D Flow analysis

WSS Pressure

Friday 13 May | 10:45 - 11:30

Oral Abstracts Featured QuickFire I Miscellaneous

Chair Francisco ALPENDURADA | London, UK // Bernhard GERBER | Leuven, BE

Time	#	Author	Abstract Title
10:45 - 10:49	79	Simon GREULICH	#1362: Involvement in patients with different rheumatic disorders
10:50 - 10:54	80	Alessia PEPE	#1366: Gender differences in the development of CMR abnormalities and cardiac complications: a multicentric prospective study in a large cohort of thalassemia major patients
10:55 - 10:59	81	Sheraz NAZIR	#1646: Comparison of T1-mapping, T2-weighted and contrast-enhanced cine imaging at 3.0T CMR for diagnostic oedema assessment in ST-segment elevation myocardial infarction
11:00 - 11:04	82	Paul Stefan BIESBROEK	#1375: Evaluation of tissue changes in remote noninfarcted myocardium after acute myocardial infarction using T1-mapping
11:05 - 11:09	83	Nisha ARENJA	#1377: Right ventricular long axis strain - The prognostic value of a novel parameter in non-ischemic dilated cardiomyopathy using standard cardiac magnetic resonance imaging
11:10 - 11:14	84	Andreas KAMMERLANDER	#1389: The role of the right ventricular insertion point in heart failure patients with preserved ejection fraction: Insights from a cardiovascular magnetic resonance study
11:15 - 11:19	85	Aatif SAYEED	#1398: Myocardial fibrosis associates with B-type natriuretic peptide levels and outcomes more than wall stress.
11:20 - 11:24	86	Fabrizio RICCI	#1478: Prognostic value of pulmonary blood volume by contrast-enhanced magnetic resonance imaging in heart failure outpatients - The PROVE-HF Study
11:25 - 11:29	87	Peter BERNHARDT	#1370: Magnetic Resonance Adenosine Perfusion Imaging as Gatekeeper of Invasive Coronary Intervention - a randomized three-years follow-up trial

Oral Abstracts Featured QuickFire II & III see next page

Oral Abstracts Featured QuickFire II
Miscellaneous

Friday 13 May | 16:10 - 16:55

Chair Gianluca PONTONE | Milano, IT // Manish MOTWANI | Los Angeles, USA

		#	
#1509: Influence of non-invasive hemodynamic CMR parameters on maximal exercise capacity in surgically untreated patients with Ebstein's anomaly	Christian MEIERHOFER	115	16:10 - 16:14
#1356: Proximal aortic stiffening in Turner is more pronounced in the presence of a bicuspid valve	Dan DEVOS	116	16:15 - 16:19
#1503: Flow pattern and vascular distensibility of the pulmonary arteries in patients after repair of tetralogy of Fallot. Insights from 4D flow CMR	Beate RUECKER	117	16:20 - 16:24
#1516: Myocardial deformation characteristics of the systemic right ventricle after atrial switch operation for transposition of the great arteries	Barbara BURKHARDT	118	16:25 - 16:29
#1633: Three-dimensional vortex formation in patients with a Fontan circulation: evaluation with 4D flow CMR	Vivian KAMPHUIS	119	16:30 - 16:34
-	withdrawn	120	16:35 - 16:39
#1483: Mitral valve prolapse: Arrhythmogenic substrates by cardiac magnetic resonance imaging	Angela SUSANA	121	16:40 - 16:44
#1596: Increased local wall shear stress after coarctation repair is associated with descending aorta pulse wave velocity: evaluation with CMR and 4D flow	Ineke NEDEREND	122	16:45 - 16:49
#1636: Three-dimensional wall shear stress assessed by 4D flow CMR in bicuspid aortic valve disease	Lydia DUX-SANTOY	123	16:50 - 16:54

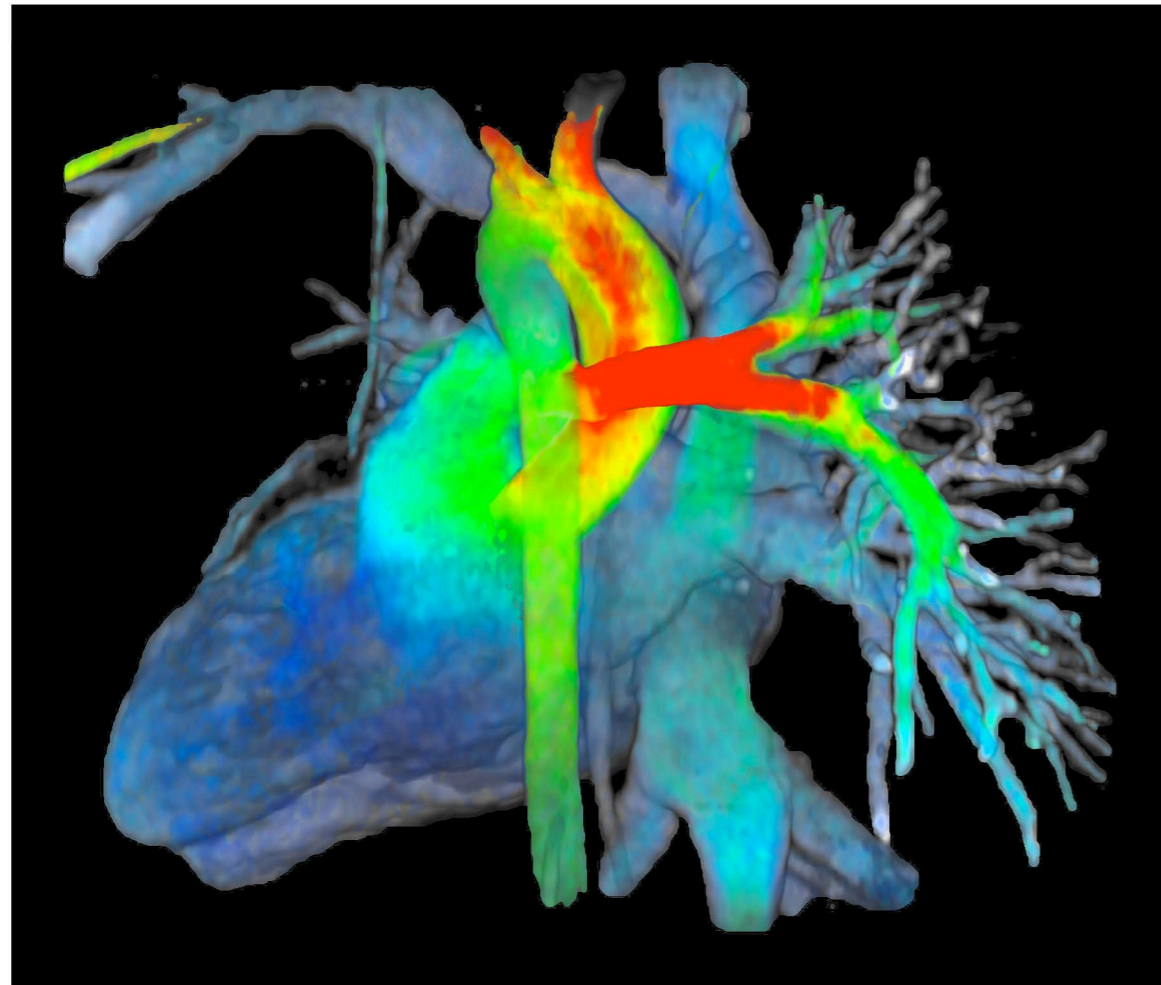
Oral Abstracts Featured QuickFire III
Miscellaneous

Saturday 14 May | 10:25 - 11:10

Chair Pier Giorgio MASCI | Lausanne, CH // Stephen CHEUNG | Hongkong, HK

		#	
#1464: Cardiac amyloidosis and aortic stenosis - The convergence of two aging processes	Joao CAVALCANTE	150	10:25 - 10:29
#1630: Blood T1 variability explained in healthy volunteers: an analysis on MOLLI, ShMOLLI and SASHA.	Stefania ROSMINI	151	10:30 - 10:34
#1408: Myocardial deformation on CMR predicts adverse outcomes in carcinoid heart disease - a new marker of risk	Boyang LIU	152	10:35 - 10:39
#1492: Myocardial perfusion reserve and global longitudinal strain in early rheumatoid arthritis	Graham FENT	153	10:40 - 10:44
#1500: Exercise CMR to differentiate athlete's heart from patients with early dilated cardiomyopathy	Jan BOGAERT	154	10:45 - 10:49
#1559: Real-time X-MRI guidance to optimise left ventricular lead placement for delivery of cardiac resynchronisation therapy	Jonathan BEHAR	155	10:50 - 10:54
#1560: The role of cardiac magnetic resonance imaging in patients undergoing ablation for ventricular tachycardia- Defining the substrate and visualizing the outcome	Sabrina OEBEL	156	10:55 - 10:59
#1590: Impact of cardiovascular magnetic resonance on clinical management and decision-making of out of hospital cardiac arrest survivors with inconclusive coronary angiogram	Anna BARITUSSIO	157	11:00 - 11:04
#1561: Detection of coronary stenosis at rest using blood oxygen-level dependent magnetic resonance imaging	Jayanth ARNOLD	158	11:05 - 11:09

ViosWorks



ASTONISH. CHANGE THE CARDIAC IMAGING PARADIGM.

ViosWorks* extends cardiac MR assessment beyond the anatomy by bringing automatic quantitative data & deep learning to cardiac imaging in a fraction of the time of conventional cardiac scans. Providing whole-heart cardiac anatomy, function, and flow in 1-free breathing, 8 minute scan with cloud-based, real-time processing of images.

Visit us at the GE Healthcare booth and at
www.viosworks.gehealthcare.com

*Not yet commercially available



The following ABSTRACTS have been selected for

Moderated ePoster Presentations

during breaks from Thursday through Saturday at the Main ePOSTER SCREEN.

All ABSTRACTS will always be available for viewing on all ePOSTER screens throughout the meeting, through the EuroCMR APP, and online at the EHJ-CI archive pages (<http://ehjcmr.oxfordjournals.org/content/by/year/2016>)

Only the main author/presenter of an abstract is mentioned with each abstract in this appendix. All authors are listed online with their abstracts in a separate authors' list in the EHJ-CI archive pages.

Thursday 12 May | 13:30 - 14:30

Moderated ePoster I New CMR Methods

Chair Stefan PIECHNIK | Oxford, UK // Ingo EITEL | Lübeck, DE

	#		
13:30 - 13:35	25	Upasana TAYAL	#1385: Longitudinal strain assessment in dilated cardiomyopathy patients using a novel accelerated DENSE sequence
13:35 - 13:40	26	Alexandros KALLIFATIDIS	#1407: Simultaneous T1 and T2 cardiac quantification with CABIRIA: initial clinical experience
13:40 - 13:45	27	Pankaj GARG	#1423: Head-to-head comparison of acceleration algorithms in 4-dimensional flow CMR
13:45 - 13:50	28	Dietrich BEITZKE	#1502: Left ventricular function and size evaluated by hybrid cardiac positron emission tomography-magnetic resonance: Intraindividual comparison of left ventricular ejection fraction and ventricular volumes derived by two modalities.
13:50 - 13:55	29	Stephanie FUNK	#1510: Left Atrium assessed by Cardiovascular Magnetic Resonance at 1.5 and 3 Tesla - age and gender effects
13:55 - 14:00	30	Shimon KOLKER	#1514: Comparison of Free Breathing Cardiac MRI Radial technique to the Standard Multi breath-hold cine SSFP CMR technique for the assessment of LV Volumes and Function
14:00 - 14:05	31	Tobias RUTZ	#1536: Self-navigated free-breathing isotropic 3D whole heart phase sensitive inversion recovery magnetic resonance without navigator for detection of myocardial infarction
14:05 - 14:10	32	Komal SAFDAR	#1547: Assessment of Right Ventricular Strain Using Myocardial Deformation Recovery Semi Automated Technique: Initial Experience and Normal Values
14:10 - 14:15	33	Filipa VALENTE	#1586: Tissue tracking myocardial deformation analysis and prediction of left ventricular remodeling in acute myocardial infarction
14:15 - 14:20	34	Ian CAVIN	#1589: Investigating strategies for optimal 31P MRS clinical cardiac at 3T: Initial Results
14:20 - 14:25	35	Francesca MACAIONE	#1620: Quantitative Criteria for the Diagnosis of the Congenital Absence of Pericardium by Cardiac Magnetic Resonance
14:25 - 14:30	36	Amardeep GOSH DASTIDAR	#1632: Widespread tissue injury during acute myocardial infarction: evidence from advanced CMR relaxometry

Moderated ePoster II & III see next page

Moderated ePoster II
Cost effectiveness and outcome

Friday 13 May | 10:45 - 11:30

Chair John GREENWOOD | Leeds, UK // Julia GRAPSA | London, UK

		#	
#1322: Computed tomography coronary angiography versus stress cardiac magnetic resonance for the management of symptomatic revascularized patients: a cost effectiveness study (STRATEGY study)	Gianluca PONTONE	70	10:45 - 10:50
#1339: Comparison of low- versus high-dose of gadobutrol for late gadolinium enhancement imaging at 1.5 Tesla: a clinical feasibility study.	Chrysanthos GRIGORATOS	71	10:50 - 10:55
#1626: The ECG as a predictor of arrhythmogenic substrate on Cardiac Magnetic Resonance Imaging in patients undergoing ablation for premature ventricular contractions	Sabrina OEBEL	72	10:55 - 11:00
#1461: Prognostic value of Cardiovascular Magnetic Resonance derived indexes of myocardial fibrosis in heart transplant recipients.	Patrizia PEDROTTI	73	11:00 - 11:05
#1523: The role of CMR in the acute phase of hospitalization: changing paradigms	Estefania DeGARATE	74	11:05 - 11:10
#1542: Preoperative CMR-based score predict ventricular response after surgical left ventricular reconstruction in ischemic heart failure patients	Giulia CARERI	75	11:10 - 11:15
#1555: Excellent response rate to cardiac resynchronization therapy guided with magnetic resonance imaging	Radka KOCKOVA	76	11:15 - 11:20
#1347: Multi-parametric Cardiac Magnetic Resonance for Prediction of Cardiac Complications in Thalassemia Intermedia: a Prospective Multicenter Study	Alessia PEPE	77	11:20 - 11:25
#1649: Comparison of T1-mapping at 3.0T CMR and angiographic APPROACH score for area at risk assessment in ST-segment elevation myocardial infarction	Sheraz NAZIR	78	11:25 - 11:30

Moderated ePoster III
Cardiomyopathies and other

Saturday 14 May | 10:25 - 11:10

Chair Robert MANKA | Zurich, CH // Viviana MAESTRINI | Rome, IT

		#	
#1340: Pathological correlates of left bundle branch disease in patients with non-ischemic cardiomyopathy: a cardiovascular magnetic resonance study	Chrysanthos GRIGORATOS	141	10:25 - 10:30
#1342: Myocardial remodelling and fibrosis in nonischemic dilated cardiomyopathy: insights from cardiovascular magnetic resonance	Andrea BARISON	142	10:30 - 10:35
#1411: The association between fibrosis and contractile dysfunction in hypertrophic cardiomyopathy	Peter SWOBODA	143	10:35 - 10:40
#1622: Persistent myocardial inflammation due to intramyocardial haemorrhage in reperfused STEMI as a precursor to adverse LV remodelling - insights from multi-parametric mapping	Heerajnarain BULLUCK	144	10:40 - 10:45
#1566: Semiquantitative analysis of low and high b value DWI for detecting myocardial edema in acute myocarditis	Jordi BRONCANO	145	10:45 - 10:50
#1567: Value of Cardiac MRI In Detecting Coronary Artery Disease In Newly Diagnosed Systolic Dysfunction	Louis-Marie DESROCHE	146	10:50 - 10:55
#1570: Usefulness of cardiac magnetic resonance in tuberous sclerosis complex	Zorba BLAZQUEZ BERMEJO	147	10:55 - 11:00
#1578: Papillary muscles offer further insight into hypertrophied hearts: a cardiovascular magnetic resonance study	Rebecca KOZOR	148	11:00 - 11:05
#1627: Diagnostic and clinical implications of CMR timing (early versus late) in patients with troponin positive acute coronary syndromes and unobstructed coronary arteries	Amardeep GOSH DASTIDAR	149	11:05 - 11:10





DOTAREM®

Gadoteric acid

**NO COMPROMISE
in THE DOTAREM WORLD**



Excellent Safety & Optimal Diagnostic Performance

DOTAREM 0.5 mmol/mL solution for injection. **COMPOSITION(*)**: Per 100 mL of solution active ingredient: Gadoteric acid* 27.932 g corresponding to: DOTA 20.246 g corresponding to gadolinium oxide 9.062 g. **Indications(**)**: Magnetic Resonance Imaging for: - cerebral and spinal disease - diseases of the vertebral column - and other whole-body pathologies (including angiography). **Posology and method of administration(**)**: The recommended dose is 0.1 mmol/kg, i.e. 0.2 mL/kg in adults, children and infants. In angiography, depending on the results of the examination being performed, a second injection may be administered during the same session if necessary. In some exceptional cases, as in the confirmation of isolated metastasis or the detection of leptomeningeal tumours, a second injection of 0.2 mmol/kg can be administered. The product must be administered by strict intravenous injection. **-Contraindications**: Hypersensitivity to gadoteric acid, to meglumine or to any medicinal products containing gadolinium. **Precautions for use**: Dotarem must not be administered by subarachnoid (or epidural) injection. The usual precaution measures for MRI examination should be taken such as exclusion of patients with pacemakers, ferromagnetic vascular clips, infusion pumps, nerve stimulators, cochlear implants or suspected intracranial metallic foreign bodies, particularly in the eye. **General particulars corresponding to all gadolinium contrast agents**: All gadolinium based contrast media can cause minor or major reactions that can be life-threatening. These can occur immediately (within 60 minutes) or be delayed (within 7 days) and are often unpredictable. Because of the risk of major reactions, emergency resuscitation equipment should be available for immediate use. Hypersensitivity reactions can be aggravated in patients on beta-blockers and particularly in the presence of bronchial asthma. These patients may be refractory to standard treatment of hypersensitivity reactions with beta agonists impaired renal function Prior to administration of gadoteric acid, it is recommended that all patients are screened for renal dysfunction by obtaining laboratory tests. There have been reports of Nephrogenic Systemic Fibrosis (NSF) associated with use of some gadolinium-containing contrast agents in patients with severe renal impairment (GFR < 30 ml/min/1.73 m²). As there is a possibility that NSF may occur with Dotarem, it should only be used in these patients after careful consideration. - CNS disorders: As with other contrast agents containing gadolinium, special precautions should

be taken in patients with a low seizure threshold. Precautionary measures, e.g. close monitoring, should be taken. All equipment and drugs necessary to counter any convulsions which may occur must be made ready for use beforehand. **Interactions with other medicinal products and other forms of interaction**. No interactions with other medicinal products have been observed. Formal drug interaction studies have not been carried out. **Fertility, pregnancy and lactation(*)**. **Effects on ability to drive and use machines(*)**. **Undesirable effects(*)**: hypersensitivity reaction including anaphylaxis, angioedema, urticaria, erythema, pruritis, rash, eczema, bronchospasm, laryngospasm, oedema, dyspnea, nasal congestion, sneezing, cough, dry throat, nausea, vomiting, diarrhea, abdominal pain, muscle contracture, muscular weakness, back pain, agitation, anxiety, paresthesia, headache, dysgeusia, thoracic pain, feeling cold, feeling hot, fever, chills, asthenia, malaise coma, convulsion, syncope, presyncope, dizziness, parosmia, tremor, conjunctivitis, ocular hyperaemia, vision blurred, lacrimation increased, eyelid edema, bradycardia, tachycardia, arrhythmia, palpitations, hypotension, hypertension, vasodilatation pallor, cardiac arrest, respiratory arrest, injection site (pain, reaction, oedema), injection site extravasation, superficial phlebitis, NSF(*). **Overdose(*)**. **PHARMACOLOGICAL PROPERTIES(*)**: Pharmacotherapeutic group: paramagnetic contrast media for MRI, ATC code: V08CA02. **Presentation(**)**: 5, 10, 15, 20, 60 & 100 mL in vial (glass) and 10, 15 & 20 mL in a pre-filled syringe (glass). **Marketing authorisation holder(*)**: Guerbet - BP 57400 - F-95943 Roissy CdG cedex - FRANCE. **Information**: tel : 33 (0) 1 45 91 50 00. **Revision**: September 2015.

(*) For complete information please refer to the local Summary of Product Characteristics
(**) Indications, volumes and presentations may differ from country to country.

Reporting of suspected adverse reactions is important as it helps to continuously assess the benefit-risk balance. Therefore, Guerbet encourages you to report any adverse reactions to your health authorities or to our local Guerbet representative.

Guerbet | 
Contrast for Life

Realisation: CM communication - P16 068 DOT - March 2016 - Photo: Olivier Buhagiar

The following CASES have been selected for

Moderated eCase Presentations

during breaks from Thursday and Friday at the Main ePOSTER SCREEN.

All CASES will always be available for viewing on all ePOSTER screens throughout the meeting and through the EuroCMR APP.

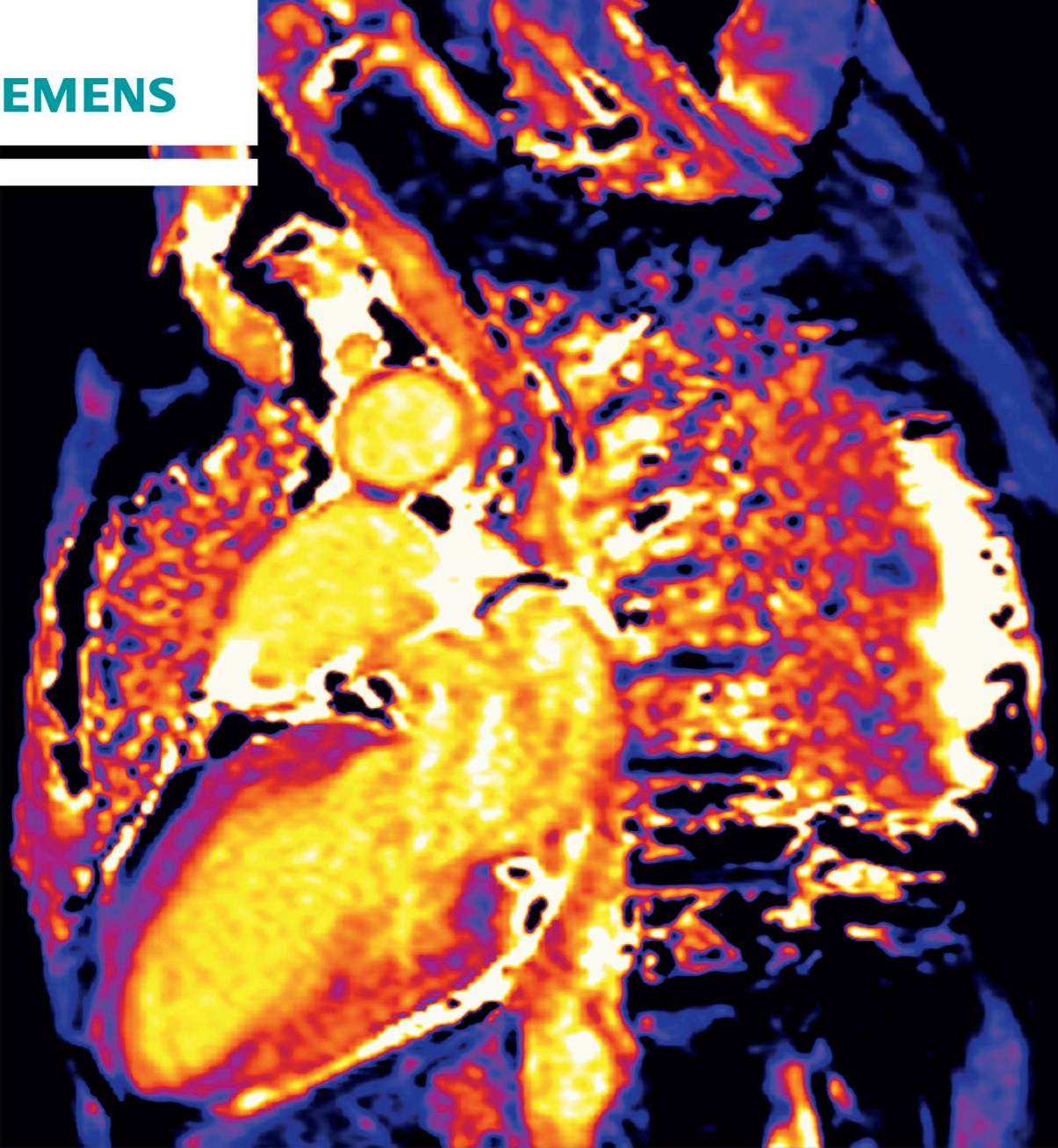
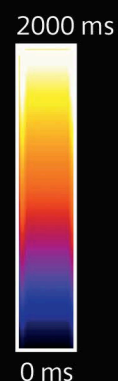
Thursday 12 May | 11:00 - 11:45

Moderated eCase I

Chair Ana ALMEIDA | Lisbon, PT // Holger THIELE | Lübeck, DE

	#		
11:00 - 11:05	8	withdrawn	
11:05 - 11:10	9	Daniela Di LISI	#90 : Iatrogenic pulmonary artery dissection in patient with ostium secundum interatrial septum defect
11:10 - 11:15	10	Helmut BUELTEL	#108 : Loeffler endocarditis with advanced endocardfibrosis and organised parietal thrombosis
11:15 - 11:20	11	Tobias RUTZ	#111 : A full cardiac evaluation in a patient with implanted cardioverter defibrillator: How adjustment of bandwidth improves image quality.
11:20 - 11:25	12	Evangelia NYKTARI	#114 : Complicated graft endocarditis
11:25 - 11:30	13	Zeeshan LAKHANI	#118 : Unusual mass like presentation of Cardiac Tuberculosis
11:30 - 11:35	14	Andrea BARISON	#130 : Left ventricular non compaction and its mimics: role of cardiovascular magnetic resonance
11:35 - 11:40	15	Monica MONAGHAN	#131 : Churg-Strauss Presenting as Eosinophilic Myocarditis with Endocardial Fibrosis and Biventricular Apical Thrombi
11:40 - 11:45	16	Manuel De LAZZARI	#133 : Arrhythmic mitral valve prolapse in the same family: role cardiac magnetic resonance

Moderated eCase II & III see next page



National Institutes of Health, Bethesda, USA

siemens.com/cmr

Cardiovascular MRI

Efficient, reliable, ready.

Add a new layer of pixel-based diagnostic information to cardiac diagnoses. Based on HeartFreeze Inline Motion Correction (Siemens unique), MyoMaps provides pixel-based myocardial quantification, on the fly. Now you can better detect global, diffuse, myocardial pathologies (T1 Map). Or better depict cardiac edema (T2 Map) and improve early detection of iron overload (T2* Map).

- Designed to evolve visual assessment to pixel based quantification of tissue characteristics
- Based on Siemens-unique HeartFreeze Inline Motion Correction
- Guide cardiovascular therapy, starting earlier and more efficiently

MyoMaps – now available on the powerful software platform *syngo* MR E11.



Leading.
With
MAGNETOM.

The following ABSTRACTS have been selected for

Viewing ONLY ePoster & Paper Poster Presentations

on screens in PASSI PERDUTI and poster boards at the BALLATOIO galleria.

Authors have been invited to be present at their poster at the time indicated for questions and discussions.

All ABSTRACTS will always be available for viewing on all ePOSTER screens throughout the meeting, through the EuroCMR APP, and online at the EHJ-CI archive pages (<http://ehjcmr.oxfordjournals.org/content/by/year/2016>)

Only the main author/presenter of an abstract is mentioned with each abstract in this appendix. All authors are listed online with their abstracts in a separate authors' list in the EHJ-CI archive pages.

Friday 13 May | 09:00 - 16:30

Viewing Only ePosters/Paper Posters

Authors have been invited to be present at their PAPER POSTER for questions during the Friday break between 10:45-11:30

- TOMAS LAPINSKAS 1323** Evaluation of right ventricular transverse strain and strain rate in patients with acute ST-segment elevation myocardial infarction: a cardiac magnetic resonance feature tracking study
- Daniele De Falco Alfano 1333** Cardiac resynchronization in ischemic heart failure patients: a comparison between therapy guided by cardiac magnetic resonance imaging and 2D-speckle tracking echocardiography.
- Chrysanthos Grigoratos 1338** Cardiac magnetic resonance versus bisphosphonate scintigraphy for diagnosis of cardiac amyloidosis.
- R. LADEIRAS-LOPES 1341** Strain relaxation index, a novel tagged MRI-derived diastolic function parameter, is impaired in metabolic syndrome
- Graham Fent 1349** Global Longitudinal Strain Predicts Chronic Myocardial Infarction in Patients with Normal Ejection Fraction
- E. ABDUL RAHMAN 1352** Optimal Dose Of Dobutamine During Low-Dose Dobutamine Stress Echocardiography In Correctly Identify Viable Segments On Cardiovascular Magnetic Resonance
- Jonathan Rodrigues 1368** Absolute wall thickening and left ventricular ejection fraction - a unifying theory of myocardial contraction and heart failure?
- Giuseppe Gibelli 1376** TRANSIENT ST ELEVATION IN ACS LIKE MYOCARDITIS
- Naira Mkrтчhyan 1379** Patients after Fontan with a 'total cavopulmonary connection' Fontan modification develop more collateral flow compared to 'old-fashioned' Fontan modifications.
- MADDALENA VALINOTI 1387** A MRI-derived 3D patient specific model for fibrosis quantification in atrial fibrillation
- EVANGELIA NYKTARI 1391** Scar burden and survival in patients with ischemic cardiomyopathy and poor LV ejection fraction
- Martin Reindl 1392** Relation of inflammatory markers with myocardial and microvascular injury in patients with reperfused ST- elevation myocardial infarction
- Kristin Arnhold 1406** Equivalence of segmented conventional and fast single-shot late gadolinium enhancement (LGE) techniques for quantitative evaluation of fibrosis in ischemic and non-ischemic cardiac disease
- Z. SAKINA A LAKHANI 1410** CARDIAC MRI APPEARANCES OF TUBERCULOSIS - A REVIEW OF VARIED PRESENTATIONS IN INDIA
- Jonathan Weir-McCall 1415** Atheroma burden, cardiac remodelling and epicardial fat: A comparison between healthy South Asian and European adults using Whole Body Cardiovascular MR
- Claudia Camaioni 1418** Symptomatic Ventricular Arrhythmias: Diagnostic Yield of Cardiac Magnetic Resonance
- Peter Swoboda 1421** Assessment of aortic stiffness in asymptomatic low risk patients with type 2 diabetes mellitus
- Sebastian J. Reinstadler 1436** Shock index as a predictor of myocardial damage and clinical outcome in ST-elevation myocardial infarction
- Hans-Josef Feistritzer 1451** Combined biomarker testing for the prediction of microvascular obstruction after primary percutaneous coronary intervention for acute ST-segment elevation myocardial infarction

Viewing Only ePosters/Paper Posters Friday 13 May | 09:00 - 16:30

Authors have been invited to be present at their PAPER POSTER for questions during the Friday break between 10:45-11:30

- A novel oscillometric technique compared with cardiac magnetic resonance for the assessment of aortic pulse wave velocity in ST-segment elevation myocardial infarction 1452 Hans-Josef Feistritz
- Aorto-pulmonary collaterals evaluated by CMR is associated to reduced effective cardiac index late after Fontan palliation 1456 Lamia Ait Ali
- Evaluation of pulmonary transit time and Pulmonary Blood Volume with first-pass perfusion CMR imaging in adult with repaired Congenital Heart disease 1458 Lamia Ait Ali
- Prognostic value of the cardiac magnetic resonance as a predictor of improvement in ventricular function after Tako Tsubo syndrome 1459 Antonia Tercero
- Diagnostic performance of ECG detection of left atrial enlargement in patients with arterial hypertension relative to the cardiac magnetic resonance gold-standard: impact of obesity 1462 Tamas Erdei
- Cardiac magnetic resonance late gadolinium enhancement in patients with genetic dilated cardiomyopathy 1467 Alexandra Sousa
- Left ventricular hypertrophy in hypertensive patients – comparison of Cardiac Magnetic Resonance and Echocardiographic analysis of morphological and functional LV-parameters. 1471 A. Brzozowska-Czarnek
- Is Angiographic Perfusion Score assessed in patients with acute myocardial infarction correlated with Cardiac Magnetic Resonance infarct size and N-terminal pro-brain natriuretic peptide in 6-month follow-up. 1472 A. Brzozowska-Czarnek
- Cardiac Magnetic Resonance Patterns of Left Ventricular Diastolic Function In Hypertrophic Cardiomyopathy 1476 Pilar Agudo-Quilez
- Impact of platelet volume on thrombus burden and tissue reperfusion in patients with STEMI treated with primary angioplasty: MRI study. 1477 Nazario Carrabba
- Right ventricle systolic function assessment and its prognostic implications in cardiac amyloidosis 1479 LUIS ALMEIDA-MORAIS
- Cardiac MRI - an important tool in the evaluation of multisystemic inflammatory diseases. An Erdheim-Chester Disease case report 1484 Ramona BICA
- Predictive value of cardiac magnetic resonance for future adverse cardiac events in patients with ST-segment elevation myocardial infarction 1485 Justyna Rajewska-Tabor
- Time-to-treatment but not thrombectomy influence infarct size and microvascular obstruction in patients with acute ST-segment elevation myocardial infarction treated with primary coronary intervention. 1486 Justyna Rajewska-Tabor
- Primary PCI versus Early Routine Post Fibrinolysis PCI for ST Elevation Myocardial Infarction 1489 Ahmed A. Mahmoud
- Evaluation of ventricular function in Fontan patients undergoing feature tracking magnetic resonance strain 1490 Akio Inage
- Impacts of atrialized right ventricle and left ventricular displacement in Ebstein's anomaly on left ventricular function assessed by cardiovascular MRI 1491 Akio Inage
- Final diagnosis for patients presenting with chest pain, troponin rise, electrocardiographic changes and normal coronary arteries: insights from Cardiovascular MRI in our population. 1494 Albert Teis
- Early Predictive Factors of LV Remodeling after STEMI; Assessment by Coronary Angiogram and Cardiovascular Magnetic Resonance 1495 Arthur CESCAI
- The pathobiologic mechanisms and the prognostic meaning of T wave inversion in acute myocarditis. A study performed by cardiac magnetic resonance 1497 Angela Susana
- The Influence of Left Atrial Function on Exercise Tolerance in Patients with Heart Failure and Preserved Ejection Fraction: A Cardiac Magnetic Resonance Feature Tracking Study 1501 Maximilian von Roeder
- Microvascular Obstruction in Patients with Anterior ST-Elevation Myocardial Infarction who Underwent Primary Percutaneous Coronary Intervention: Predictors and Impact on the Left Ventricular Function 1504 Ahmad Mahmoud
- Histological Validation of ECV Quantification by Cardiac Magnetic Resonance T1 Mapping in Cardiac Amyloidosis 1508 Franz Duca
- Comparative Evaluation of Flow Quantification Across the Atrioventricular Valve in Patients with Functional Univentricular Heart After Fontan's Surgery and Healthy Controls: Measurement by 4D Flow MR Imaging and Streamline Visualization 1513 Hoi Lam Helen She
- Does arterial switch for d-transposition of the great arteries alter myocardial deformation of the ventricles? 1515 Barbara Burkhardt
- Accuracy of T1 Mapping by multi-professional CMR operators to predict myocardial infarct 1527 Pankaj Garg
- Detecting hypertensive heart disease: the additive value of cardiovascular magnetic resonance imaging 1531 Jonathan Rodrigues
- DIAGNOSTIC PERFORMANCE OF CARDIAC MAGNETIC RESONANCE STRAIN PARAMETERS IN ASSESMENT OF MYOCARDIAL ISCHEMIA . 1534 BEGONA IGUAL

Friday 13 May | 09:00 - 16:30 Viewing Only ePosters/Paper Posters

Authors have been invited to be present at their PAPER POSTER for questions during the Friday break between 10:45-11:30

- Carla Contaldi 1535 Relationships between left ventricular filling pressures and longitudinal dysfunction with myocardial fibrosis in uncomplicated hypertensive patients
- Begona Igual Munoz 1539 PREDICTIVE CLINICAL FACTORS OF TISSUE DAMAGE SEVERITY IN REPERFUSED ACUTE MYOCARDIAL INFARCTION AS VISUALIZED BY CARDIAC MAGNETIC RESONANCE.
- Begona Igual Munoz 1541 Which CMR derived parameter predicts better the need of invasive treatment in aortic coarctation?
- Olga Mochula 1543 Contrast-enhanced magnetic resonance tomography in patients with supraventricular tachyarrhythmias
- Harrie Van den Bosch 1546 Prognostic Value of CMR Imaging Biomarkers on Outcome in Peripheral Arterial Disease: a 6-year Follow-up Pilot Study
- Michael Frick 1549 Dobutamine-Stress-CMR in Young Adults after Arterial Switch Operation as Neonates
- Gert Klug 1553 Impact of posteromedial papillary muscle infarction on mitral regurgitation after ST-segment elevation myocardial infarction
- Sara El Fawal 1556 Role of cardiac magnetic resonance imaging in assessment of left ventricular hypertrophy
- Jessica Webb 1569 Using intrinsic Cardiac Shear Waves to measure Myocardial Stiffness: Preliminary results from Patients with Heart failure with preserved Ejection Fraction
- Aleksandra Maksimova 1571 Relationship of cerebrovascular reactivity and MRI pattern of carotid atherosclerotic plaque
- Agnes Mayr 1577 Feasibility study of an MR conditional pedal ergometer for cardiac stress MRI
- Michiel Winter 1581 Pulmonary valve replacement for severe pulmonary stenosis has a positive effect on left ventricular remodeling.
- K. D. Menacho Medina 1582 The RV after cardiac surgery, more resilient than thought: multiparametric quantification shows altered rather than reduced function
- Juan Sztajzel 1584 Usefulness of cardiovascular magnetic resonance to differentiate coronary artery disease from non ischemic cardiomyopathy in patients with heart failure
- Theano Papavassiliu 1593 What does CMR add to the ESC Risk Prediction Model to Assess the Occurrence of Sudden Cardiac Death in Patients with HCM?
- Shanat Baig 1597 Detecting Progression of Diffuse Interstitial Fibrosis in Alstrom Syndrome.
- NEREJDA SHEHU 1612 Diffuse fibrosis in the ventricles of patients with transposition of great arteries late after atrial switch
- Joao Pais 1631 Utility of Cardiac Magnetic Resonance in the diagnosis and stratification of arrhythmic risk in patients with confirmed or suspected ventricular arrhythmias
- Giulia Vinco 1635 Size matters: pulmonary veins geometry by cardiac magnetic resonance imaging in atrial fibrillation patients.
- Jessica Webb 1642 How do the differences in Left Ventricular wall measurements from Echocardiography and CMR in patients with Hypertrophic Cardiomyopathy affect current Sudden Cardiac Death Risk Scores?
- Vivian Kamphuis 1651 Noninvasive assessment of intracardiac viscous energy loss in Fontan patients from 4D Flow CMR
- Manal Bensaoud 1653 BEHCET AND MYOCARDIAL INFARCTION: A RARE COMBINATION

Fri 13 May 17:30 -Sat 14 May 14:00 Viewing Only ePosters/Paper Posters

Authors have been invited to be present at their PAPER POSTER for questions during the Saturday break between 10:25 - 11:10

- M Asieh Abawi 1328 Impact of New Cerebral Ischemic Lesions On the Occurrence of Delirium after Transcatheter Aortic Valve Implantation
- Daniele De Falco Alfano 1329 Heart T2* assessment to measure iron overload using different software tools in patients with Thalassemia Major
- Daniele de Falco Alfano 1332 Hypertrabeculated Left Ventricle at Cardiac Magnetic Resonance Imaging: ? -Thalassemia Major vs. Left Ventricular Non -Compaction Disease
- Tarique AlMusa 1335 Aortic Regurgitation following Transcatheter Aortic Valve Implantation (TAVI): a CMR Study of two prosthesis designs
- Chun-Ho Yun 1336 Incremental value of semi-quantitative evaluation of myocardium perfusion with 3T stress cardiac MRI
- Caroline Richmond 1343 Left ventricular morphological quantification with single shot and free-breathing SSFP cine imaging compared with standard breath-hold SSFP cine imaging.
- Antonella Meloni 1344 Changes of cardiac iron and function during pregnancy in transfusion-dependent thalassemia patients
- Antonella Meloni 1346 Significant improvement of survival by T2* MRI in thalassemia major
- Laura Dobson 1350 The impact of trans-catheter aortic valve implantation induced left-bundle branch block on cardiac reverse remodelling

Viewing Only ePosters/Paper Posters Fri 13 May 17:30 -Sat 14 May 14:00

Authors have been invited to be present at their PAPER POSTER for questions during the Saturday break between 10:25 - 11:10

Value of magnetic resonance myocardial perfusion imaging in patients with indeterminate coronary computed tomography angiography results	1351 Christopher Schneeweis
Gender differences in response to Transcatheter Aortic Valve implantation in patients with severe aortic stenosis assessed by feature tracking	1353 James Foley
A qualitative assessment of first-pass perfusion bolus timings in the assessment of myocardial ischemia: A magnetic resonance study.	1354 Shona Matthew
MRI prospective survey on cardiac iron and function and on hepatic iron in non transfusion-dependent thalassemia intermedia patients treated with desferrioxamine or non chelated.	1355 Antonella Meloni
CORONARY CALCIFICATION COMPROMISES MYOCARDIAL PERFUSION IRRESPECTIVE OF LUMINAL STENOSIS	1358 T. Mohamed Ben Grid
Non-contrast three-dimensional magnetic resonance imaging for pre-procedural assessment of aortic annulus dimensions in patients undergoing transcatheter aortic valve implantation	1359 Marco Barbanti
Systemic ventricularization of the left atrium with bileaflet mitral valve prolapse: impact on quantification of mitral regurgitation	1360 Pierre Monney
CMR assessment of left ventricular remodeling 6 months after percutaneous edge-to-edge repair using Mitraclip	1361 Bernard Paelinck
Accuracy of Transthoracic Echocardiography in comparison of Cardiac Magnetic Resonance in the assessment of proximal aortic dilatation	1363 Dario Leone
CMR for myocardial iron overload assessment: a new calibration curve from the MIOT project	1374 Antonella Meloni
CAN SPECKLE TRACKING IMAGING REVEAL MYOCARDIAL IRON OVERLOAD IN THALASSEMIA MAJOR? A COMBINED ECHOCARDIOGRAPHY AND CARDIAC MAGNETIC RESONANCE STUDY	1381 Antonella Meloni
Native myocardial T1 mapping in patients with pulmonary hypertension and age matched volunteers.	1382 Laura Saunders
A Insidious Line Between Thalassemia Intermedia And Left Ventricular Non-Compaction Disease: The Role Of CMR	1384 Antonella Meloni
Pulmonary Artery : Ascending Aorta Diameter - An Important and Easily Measureable Prognostic Parameter	1388 A. Kammerlander
Novel carotid artery ultrasound index - Extra-media thickness and a well-established cardiac magnetic resonance fat quantification method.	1394 MACIEJ HABERKA
Validation of CMR-derived LVOT diameters against direct in-vivo measurement	1403 Francois-Pierre Mongeon
Early myocardial perfusion measured by CMR in acute myocardial infarction treated by primary PCI - a postconditioning study	1409 Anne Bethke
Assessment of paravalvular aortic regurgitation after transcatheter aortic valve implantation using cardiac magnetic resonance imaging: a comparative study with echocardiography and angiography	1420 Najime BOUHZAM
Left atrial strain measured by feature tracking predicts left ventricular end diastolic filling pressure	1422 James Foley
Validation of extracellular volume equation by serial cardiac magnetic resonance imaging measurements in patients with varying hematocrit	1426 Siri Lagethon Heck
Assessing diastolic function applying Cardiovascular Magnetic Resonance - comparison with the gold standard	1427 Josephine Kermer
ROLE OF ADENOSINE STRESS CARDIAC MRI IN THE SETTING OF CHRONIC TOTAL OCCLUSION OF CORONARY ARTERIES	1475 Giovanni Malanchini
Aortic Elasticity Indexes by Magnetic Resonance Predict Progression of Ascending Aorta Dilatation	1520 Giovanni D. Aquaro
Combined atrioventricular assessment of diastolic function by cardiac magnetic resonance	1522 Giovanni D. Aquaro
Safety, image quality and clinical utility of cardiac magnetic resonance in patients with antiarrhythmic devices.	1537 Begona Igual Munoz
Usefulness of cardiac magnetic resonance to predict the need for surgical procedures in patients with mitral regurgitation.	1538 Begona Igual Munoz
Normal T1, T2, T2* and extracellular volume reference values in healthy volunteers at 3 Tesla cardiac magnetic resonance.	1550 Clotilde ROY
Comprehensive intra-ventricular myocardial deformation strain analysis in healthy volunteers: implications for regional myocardial disease processes	1551 Alessandra Scatteia
Elastic properties changes of aorta in patients with dilatation of the ascending aorta evaluated by Magnetic Resonance	1557 Katarzyna Katulska
The prevalence of active myocarditis assessed by CMR in patients with clinically suspected myocarditis.	1558 Tomasz Brzostowicz
Quantitative assessment of myocardial scar heterogeneity using texture analysis to risk stratify post-MI patients for ICD insertion	1563 Thomas Gibbs

Fri 13 May 17:30 -Sat 14 May 14:00 Viewing Only ePosters/Paper Posters

Authors have been invited to be present at their PAPER POSTER for questions during the Saturday break between 10:25 - 11:10

Sheraz Nazir 1564	Gender differences in exercise capacity and LV remodeling in response to pressure overload in aortic stenosis.
Thu Thao Le 1572	Myocardial wall stress as a novel CMR measure to assess cardiac function
Alessandra Scatteia 1573	Feature tracking cardiac magnetic resonance to assess LV mechanics in pressure and volume overload
Anna Baritussio 1574	Safety, feasibility and clinical impact of Cardiovascular Magnetic Resonance in patients with MR-conditional devices
Thomas Treibel 1576	T1 Mapping at 1-Year Following Aortic Valve Replacement: Baseline Geometry Defines Magnitude of Fibrosis Regression
Rocio Hinojar 1583	Normal values of LV global myocardial mechanics using two and three-dimensional cardiovascular magnetic resonance
Filipa Valente 1585	Prediction of infarct transmuralty in acute myocardial infarction based on cardiac magnetic resonance deformation analysis
Christian Meierhofer 1595	Measuring invasive blood pressure by catheters guided solely by Cardiovascular Magnetic Resonance by using a new guidewire without the need of a hybrid CMR-fluoroscopy suite
Sebastian Hilbert 1599	Influence of active and passive cardiac implants on CMR image quality : results from a consecutive patient series
Roel van der Palen 1600	Reproducibility of aortic 4D flow measurements in healthy volunteers
Filippo Piatti 1601	An automatic approach to extract 4D flow hemodynamic markers: application in BAV-affected patients
Rocio Hinojar 1602	Global myocardial mechanics with 2 and 3-Dimensional cardiovascular magnetic resonance feature tracking in patients with myocarditis
Filippo Piatti 1603	A CMR-based clinician-friendly assessment of in vivo left ventricle hemodynamics
Rocio Hinojar 1604	Reproducibility of left atrial strain using cardiovascular magnetic resonance myocardial feature tracking
Elisa McAlindon 1605	The severity of myocardial infarction in STEMI, determined by transmuralty of infarct and infarct characteristics, impacts on myocardial T2 values.
Elisa McAlindon 1606	MicroRNA as potential biomarkers of acute myocardial damage following STEMI.
Elisa McAlindon 1607	Myocardial blush grade is associated with microvascular obstruction on CMR following STEMI.
Kaoru Tanaka 1608	4D Flow CMR imaging: Comparison of conventional parallel imaging and variable density k-t acceleration
Mohammed S.M. Elbaz 1609	In-vitro comparison of segmented-gradient-echo versus non-segmented echo planar imaging 4D Flow CMR: validation of flow volume and 3D vortex ring assessment
Ana Beatriz Solana 1614	Not just 2D but also 4D flow measurements in pulsatile phantom are accurate and reproducible
Laura-Ann McGill 1615	Diffusion Tensor Imaging: Comparison of Hypertrophic Cardiomyopathy, Hypertension and Healthy Cohorts
Constanze Merten 1624	Impact of myocardial fibrosis measured by cardiac magnetic resonance imaging on reverse left ventricular remodelling after transcatheter aortic valve implantation
Constanze Merten 1625	Prosthetic valve regurgitation after transcatheter aortic valve implantation with new-generation devices compared to surgical aortic valve replacement - a cardiac magnetic resonance imaging flow measurement analysis
Estefania De Garate 1637	Assessment of Aortic and Pulmonary Artery stiffness in Patients with COPD using Cardiac Magnetic Resonance
G. Luis Alonso Salinas 1638	Myocardial Mechanics implications using 2D Cardiovascular Magnetic Resonance in Aortic Regurgitation.
A. Ghosh Dastidar 1639	Delineation of myocardial infarction & viability by 12 lead ECG vs cardiac magnetic resonance
A. Ghosh Dastidar 1641	Regional variation in native T1 values in normal healthy volunteers?
Sheraz Nazir 1645	Feasibility of myocardial strain assessment using tissue tracking at 3.0T CMR following ST-segment elevation myocardial infarction
Joao Pais 1648	Diagnostic Impact of Cardiac Magnetic Resonance in patients with acute chest pain, troponin elevation and no significant angiographic coronary artery disease

STRESS

can be **so relaxing.**



Accutron[®] MR3!
www.i-love-stress.com

The specialist
for Stress-MRI!

Integrated infusion pump!

Wireless & 3-Tesla-capable!

Innovation – Made in Germany!

MED TRON[®] AG

Contrast medium injectors and consumables
for CT, MRI and angiography

Hauptstr. 255 · D-66128 Saarbruecken
For more info: www.medtron.com

The following CASES have been selected for
Viewing ONLY eCase Presentations

on screens in PASSI PERDUTI .

All CASES will always be available for viewing on all ePOSTER screens throughout
the meeting and through the EuroCMR APP.

Viewing Only eCases

- | | | |
|---------------------|----|---|
| Hemant Chaturvedi | 52 | Apical hypertrophic cardiomyopathy with hemodynamically unstable Ventricular arrhythmia - atypical presentation |
| Wisam Yassi | 56 | Cardiovascular magnetic resonance imaging in ventricular tachycardia: in search of the culprit |
| Punitha Arasaratnam | 63 | Combined Apical Hypertrophic Cardiomyopathy and Left Ventricular Non-Compaction in MYBPC3 Mutation: Example of an Extreme Phenotype From A High Risk Family |
| Fabio Magliulo | 64 | Tako-tsubo syndrome and myocarditis: Two sides of the same coin or same side for two different coins? |
| Angela Susana | 65 | Heart break related to intramyocardium bridge stenting: a rare complication disclosed by cardiac magnetic resonance |
| Hanaa Abd-Elaziz | 70 | What is this LV pseudoaneurysm? |
| Silvia Pica | 76 | Role of cardiac magnetic resonance in the differential diagnosis of mechanical complications occurring after myocardial infarction |
| Abdalla Elagha | 78 | Fatty Left Ventricular Cardiomyopathy: An Under-Diagnosed Disease |
| Iris Esteve-Ruiz | 80 | MRI in myocardial viability |
| Rebecca Schofield | 85 | Desmin mutation and Dilated cardiomyopathy |
| Tamas Erdei | 86 | A rare case of acute pulmonary embolism and right ventricular thrombi in a patient with previous history of Reiter's syndrome |
| A. Quijada-Fumero | 87 | An unusual cardiac metastasis |
| Anna Baritussio | 88 | Unusual Large Mobile Pedunculated Left Ventricular Masses |

More cases see next page

Viewing Only eCases

Myocardial Oedema in Hypertrophic Cardiomyopathy

A Huge Left Ventricle Pseudo aneurysm.

Relaxometry CMR Imaging in Patient with Chest Pain: how to Complement the Diagnosis of Ischemic Heart Disease

Advanced Relaxometry to Aid Myocardial Tissue Characterization in an Intricated Case of Fibro-Fatty Myocardial Infiltration.

Out of hospital cardiac arrest early post-partum

The role of 18F-FDG/PET-CT and Cardiovascular-MRI with late-gadolinium enhancement (LGE-CMR) in myocardial revascularization in NSTEMI

Cardiac Amyloidosis

A post-ischemic LV pseudo-aneurysm mimicking myopericarditis

A case of Left Ventricular Pseudoaneurysm

Thoracic aortic aneurysm: an incidental finding

Case presentation of the first genetically proven Fabry disease in Latvia

Reversible left ventricular hypertrophy

Techniques matter: the pitfalls of non-ischaemic LGE imaging

Pediatric Right Ventricular Cardiomyopathy, is this ARVD or else?

Left ventricular non-compaction cardiomyopathy mimicking a myocardial infarction

APICAL HYPERTROPHIC CARDIOMIOPATHY: TIME FOR A RECONSIDERATION.

Successful repair of ruptured interventricular septum in a patient with myocardial infarction

Multimodality Imaging in a Patient Management after Sudden Cardiac Arrest

obliteration of left ventricular apex: tumor, thrombus or endomyocardial fibrosis?

An unclear septum-like structure in the left atrium after a correction of total anomalous pulmonary venous return (TAPVR) to the coronary sinus.

Unusual latrogenic cyanosis

Arrhythmogenic right ventricular cardiomyopathy in professional athletes

An uncommon cause for refractory heart failure

Partial anomalous pulmonary venous connection in a 70-year-old patient

An unexpected finding in a patient with ventricular tachycardia and impaired left ventricle systolic function

"Not so fast, Mr Cardiac Surgeon"

Cardiac Sarcoidosis: across the spectrum of the disease

An uncommon etiology of acute ischemic stroke detected by CMR

Cardiovascular Magnetic Resonance of the Aorta in a Patient with Marfan Syndrome

89 Anna Baritussio

95 Eman ElSharkawy

97 Alessandra Scatteia

98 Alessandra Scatteia

99 Alessandra Scatteia

101 CARMELO CICCIO

102 Anastasiya Efimova

103 Cecchetto Antonella

104 Abdallah Almaghraby

105 Helena Nascimento

117 Krista Lesina

120 Alison Smyth

121 Stefania Rosmini

122 MOHAN BASAVARAJU

128 Juan Sztajzel

136 Francesco Radico

137 TOMAS LAPINSKAS

140 Tomaz Podlesnikar

141 Hajar Barahioui

142 Tomasz Baron

144 Aparna Deshpande

145 Csilla Czibalmos

146 Pedro Pinto-Teixeira

149 Marta Braga

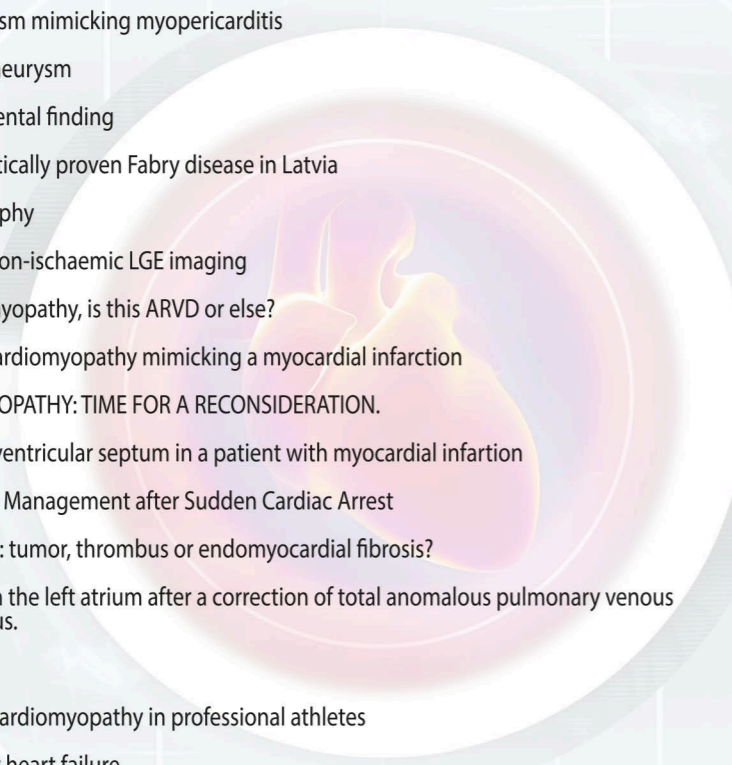
150 Agliano Bruno Salvador

153 Sara Guerreiro

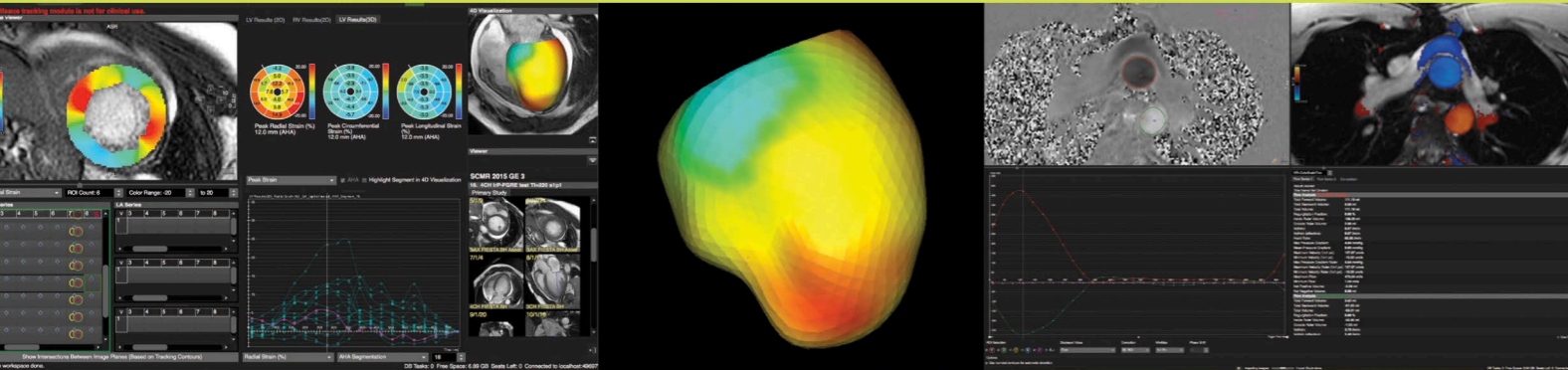
163 Joao Abecasis

168 Aida Soufiani

169 Tomaz Podlesnikar



Software for the evaluation of Cardiovascular MRI and CT Images



cvi⁴² made for you

- Cardiomyopathies: Strain analysis
- Inflammatory disease: T2 ratio, T2 mapping
- Fibrosis: LGE, T1 map, ECV map
- Hemochromatosis: T2*

Visit our Clinical Specialists at EuroCMR Booth 2

circlecvi.com

8th Annual European Course on Cardiovascular Magnetic Resonance

Munich, Germany | June 16-18, 2016

The EuroCMR course is designed for cardiologists, radiologists and technologists interested in obtaining basic knowledge on the principles and clinical practice of cardiovascular magnetic resonance (CMR).

For more information and registration
www.cmr-course.de



some places still available!

Upon completion of this three-day lecture and hands-on course the participants should be able to:

- Acquire** general knowledge on basic CMR imaging techniques.
- Apply** these CMR imaging techniques for the most common clinical indications.
- Utilize** CMR imaging for the clinical work-up of coronary artery disease and myocardial viability.
- Demonstrate** familiarity with the implementation of a basic CMR exam, and evaluate the specific imaging protocols for the most common referrals.
- Read and interpret** CMR images.

Endorsed by

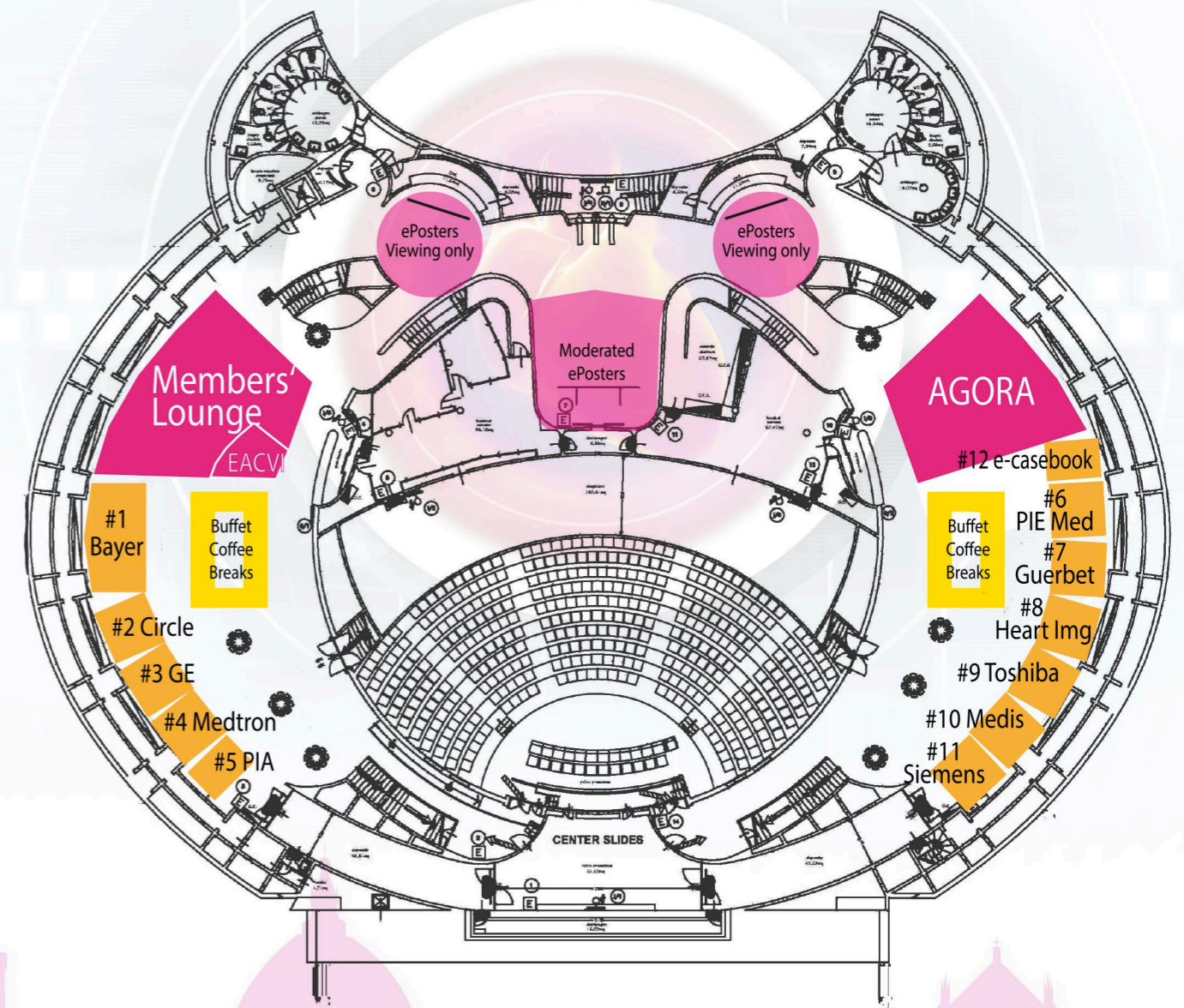


EXHIBITIONS

Please find information about all INDUSTRY EXHIBITIONS on the following pages.

All exhibitions are taking place in PASSI PERDUTI in the basement next to the MAIN AUDITORIUM.

The map shows you where each booth is located, the booth number matches the number in the directory on the next pages.



Bayer Pharma AG

Müllerstrasse 178 | 13353 Berlin | Germany

Contact

Dr Ulrike BERGMANN | ulrike.bergmann@bayer.com | +49 30 4681 2330

www.radiology.bayer.com

Bayer's Radiology unit is a global leader in developing and manufacturing contrast agents used in X-ray, computed tomography (CT) and magnetic resonance imaging (MRI), as well as injection systems for diagnostic and therapeutic medical procedures in CT, MRI and cardiovascular and peripheral vascular disease.



Bayer

Booth #1

Circle Cardiovascular Imaging BV

Obriglaan 15 | 1852 KA Heiloo | Netherlands

Contact

Jocelyn SYMBORSKI | jocelyn@circlecvi.com | +4034532061

www.circlecvi.com

Circle Cardiovascular Imaging develops and markets cardiac post-processing software that allows for the evaluation and analysis of MR and CT images. Available for clinical and research use, the stand-alone software provides full DICOM and PACS connectivity. Circle operates worldwide and its products (cvi42, cmr42, ct42, and report42) have been approved for the Canadian, American, Australian, Korean and European markets. Circle's goal is to contribute to quality in cardiovascular imaging and research.



Booth #2

GE Healthcare

283, rue de la Minière | 78 533 Buc | France

Contact

Sonia KHELKHAL | sonia.khelkhal@ge.com

<http://sc.ge.com>

GE Healthcare provides transformational medical technologies and services to meet the demand for increased access, enhanced quality and more affordable healthcare around the world. GE (NYSE: GE) works on things that matter - great people and technologies taking on tough challenges. From medical imaging, software & IT, patient monitoring and diagnostics to drug discovery, biopharmaceutical manufacturing technologies and performance improvement solutions, GE Healthcare helps medical professionals deliver great healthcare to their patients.



Booth #3

MEDTRON AG

Hauptstrasse 255 | 66128 Saarbruecken | Germany

Contact Sandra NOZAR | s.nozar@medtron.com

www.medtron.com

MEDTRON AG is a globally active company working in the field of medical engineering. As one of the leading manufacturers of ultramodern contrast medium injectors, MEDTRON AG has made its name on the market: Across the globe, many thousand doctors, hospitals and diagnostic centres place their trust in MEDTRON's contrast medium injectors made in Germany. Our innovative and high-quality injector systems complement virtually all modern methods of examination which can be performed with the help of medical engineering imaging systems, such as magnetic resonance imaging, computed tomography and angiography. Our goal is to combine improved diagnostics, patient-friendliness and cost effectiveness. To facilitate the optimization of the examination techniques, we run development projects involving all renowned manufacturers of radiological imaging systems and devices. MEDTRON offers a wide range of device-specific and high-quality consumables for its injectors. MEDTRON AG - Essential for contrast.



Booth #4

Precision Image Analysis

8760 - 122th Ave NE | 98033 Kirkland | USA

Contact

Mary WAISS | marketing@pia-medical.com | +1 425 822 8199

www.pia-medical.com

Precision Image Analysis (PIA) provides an innovative cloud-based image post-processing analysis service for use in diagnostic medical studies, including MRI and CT. HIPAA compliant IT architecture enables you to upload images, monitor, track, retrieve and modify analyses remotely. PIA specializes in Cardiac MR and CT post-processing and has the ability to develop protocols for custom analyses for both clinical and research applications.



Booth #5

Pie Medical Imaging

Philipsweg 1 | 6227 AJ Maastricht | Netherlands

Contact Sander ANDRIEN | pmi@pie.nl | +31(0)433281328

www.piemedicalimaging.com

Pie Medical Imaging is market leader in cardiovascular analysis software for cardiology and radiology and is well known for its Cardiovascular Angiographic Analysis System (CAAS) and 3mensio products. We have a proven record of being a trustworthy partner and provide easy-to-use, state of the art software solutions. This year at Euro-CMR we present our exiting new CAAS MR 4D flow software for visualization and quantification of 3D phase contrast MR images. Results include interactive visualization of streamlines, wall shear stress, pressure difference and 2D flow parameters, all produced within a few mouse clicks. Also check our upcoming CAAS MRV 4.2 version which includes a new user interface, improved functional analysis and tissue mapping module (T1, T2, T2*). It is the tool for fast, intuitive and comprehensive cardiovascular post-processing.



Booth #6

GUERBET

15 RUE DES VANESSES ZONE PARIS NORD 2 | 93420 VILLEPINTE | France

Contact Chloe THIERY | chloe.thiery@guerbet-group.com | +33 145915194

www.guerbet.com

Guerbet is a human-scale company that aims to become a new global leader in medical imaging. Pioneer in contrast media, Guerbet is the only pharmaceutical group dedicated to medical imaging worldwide, with a presence in almost 80 countries via a network of subsidiaries and distributors. The company offers a comprehensive range of CT scan, Cath Lab, Magnetic Resonance Imaging (MRI) and Interventional Radiology and Theranostics (IRT) products, along with a range of injectors and related medical devices to improve patients' diagnosis, prognosis and quality of life. Advancing in innovation solutions, the diagnosis of major diseases and interventional radiology while reconciling efficacy and cost containment, are at the heart of Guerbet's mission. Since the acquisition of Mallinckrodt's "Contrast Media and Delivery Systems" activity, its total workforce is of 2,500 employees.



Booth #7

Heart Images Technologies

5003 Southpark Drive | 27713 Durham | USA

Contact

Carlee REIMER | carlee.reimer@heartit.com | +1 919 585 1042

www.heartit.com

For over 10 years, Heart Images Technologies has offered worldwide access to diagnostic-quality DICOM images using nothing but a web-based browser. Now your web browser is also a CMR workstation (volumes, VENC, T1/T2, etc), your structured reporting system (382 data elements) and your admission ticket to a searchable data base, real time collaboration, and multi-center trial organization tools. Share your deidentified images, and reports, with your colleagues across the country and around the world!



Booth #8

Toshiba Medical Systems Europe

Booth #9

Zilverstraat 1 | 2718RP Zoetermeer | Netherlands

Contact

Jan de BRUIJN | jan.debruijn@toshiba-medical.eu | +31611526311

www.toshiba-medical.eu/eu/

For over 140 years Toshiba's research and development has improved the health and welfare of people around the world. Today, Toshiba Medical Systems offers a full range of diagnostic imaging products and is a reliable service partner in more than 135 countries around the globe. Our Mission is to deliver the best quality products and services, as well as the industry's best after-sales support through long-term, customer focused partnerships.

TOSHIBA
Leading Innovation >>>

Medis Medical Imaging Systems BV

Booth #10

Schuttersveld 9 | 2316 XG Leiden | Netherlands

Contact

Daniel GARCIA MIRANDA | info@medis.nl | +31 (0) 71 5223244

www.medis.nl

Since 1989 Medis medical imaging systems is a leading provider of software for the quantification of cardiovascular images. In Florence we will demonstrate our latest solution for Cardiovascular MR, Medis Suite MR, including QMass, QFlow and MRView to provide a total solution for post processing routine cases. In addition QMap and QStrain offer comprehensive results for research purposes. We are located in booth #10 and look forward to meeting you there.



Siemens Healthcare GmbH

Booth #11

Allee am Röthelheimpark 2 | 91052 Erlangen | Germany

Contact Janet VOGLER | janet.vogler@siemens.com | +49 (162) 4382210

www.healthcare.siemens.com/

Siemens Healthcare GmbH is one of the world's largest suppliers of technology to the healthcare industry and a leader in medical imaging, laboratory diagnostics and healthcare IT. All supported by a comprehensive portfolio of clinical consulting, training, and services available across the globe and tailored to customers' needs. Managing rapid procedure growth and minimizing costs, while at the same time achieving clinical excellence are some of the central challenges affecting healthcare around the globe. Magnetic Resonance, a Business Line at Siemens Healthcare, turns these challenges into opportunities. Four unique technologies, Tim, Dot, Trendsetting Applications, and Life Design, offer our customers exceptional image quality, efficiency & speed, and patient friendliness, while at the same time providing investment protection. Equipped with these technologies and a very strong global collaboration network, we enable our customers to lead MRI.

SIEMENS

e-casebook

Booth #12

Eclat Esaka Building 3F, 1-18 Toyotsu-Cho | 564-0051 Osaka | Japan

Contact

Paul LANCASTER | lancaster@heartorg.co.jp | +81 8014 874028

www.e-casebook.com

e-casebook is an online case-based DICOM (digital imaging) data sharing tool for the purpose of education and research among the global medical community. Cases can be discussed in detail while viewing high-quality DICOM data and videos online. Doctors can draw and write comments directly onto the paused video image to make specific references to what is being discussed. The e-casebook system is available online anytime, anywhere, through mobile phone, tablet or PC to enable groups of doctors to discuss cases securely in private groups. Come and visit the e-casebook booth to find out more.

e casebook

List of Authors

All speakers and presenters of EuroCMR 2016 are listed alphabetically (by last name) on the following pages. The numbers next to each name indicate the page you can find each author at.

For abstracts and cases only the main author/submitter/presenter is listed.

A comprehensive list of all abstract authors is published online at the EHJ-CI archive pages

<http://ehjcmr.oxfordjournals.org/content/by/year/2016>



M. Asieh	Abawi	51
Hanaa	Abd-Elaziz	46, 55
Amna	Abdel-Gadir	46
Effarezan	Abdul Rahman	49
Joao	Abecasis	56
Gloria	Abreu	46
Pilar	Agudo-Quilez	50
Lamia	Ait Ali	50
Tarique	Al Musa	51
Rashid	AL Umairi	31, 46
Zahra	Alizadeh Sani	27
Abdallah	Almaghraby	56
Mouaz	Al-Mallah	18, 27
Ana	Almeida	16,
Luis	Almeida-Morais	50
Gonzalo Luis	Alonso Salinas	53
Francisco	Alpendurada	18,
Antonio Matteo	Amadu	25
Raquel	Amier	46
Haifa	Amutairi	31
Cecchetto	Antonella	56
Giovanni Donato	Aquaro	25, 46, 52
Punitha	Arasaratnam	55
Nisha	Arenja	37
Kristin	Arnhold	49
Jayanth	Arnold	38
Monika	Arzanauskaite	23
Sonya	Babu-Narayan	19, 25
Shanat	Baig	51
Hajar	Barahioui	56
Andrea	Barison	33, 42, 45
Anna	Baritussio	23, 38, 53, 55, 56
Tomasz	Baron	56
Mohan	Basavarju	56
Cristina	Basso	22, 23, 32, 33
Rachel	Bastiaenen	25
Jeroen	Bax	22
Jonathan	Behar	38
Dietrich	Beitzke	41
Manal	Bensaoud	51
Peter	Bernhardt	37
Colin	Berry	17,
Anne	Bethke	52
Nuno	Bettencourt	30, 33
Ramona	Bica	50
Paul Stefan	Biesbroek	37
Malenka	Bissell	17, 24
Zorba	Blazquez Bermejo	42
Jan	Bogaert	16, 19, 38
Sebastian	Bohnen	25
Najime	Bouhzam	52
Noelia	Bouzas	31
Marta	Braga	56
Jordi	Broncano	42
Oliver	Bruder	23, 26
Agliano	Bruno Salvador	56
Tomasz	Brzostowicz	52
Agata	Brzozowska-Czarnek	50
Chiara	Bucciarelli-Ducci	18,
Helmut	Bueltel	45
Heerajnarain	Bulluck	31, 42
Barbara	Burkhardt	23, 38
Peter	Buser	18,
Maria Jose	Calero Rueda	23
Camilla	Calvieri	25
Claudia	Camaioni	25, 49
Gabi	Captur	27
Giulia	Careri	42
Marcus	Carlsson	17,
Nazario	Carrabba	50
Joao	Cavalcante	38
Ian	Cavin	41
Arthur	Cescai	50
Zeinabou	Chabarnoux	31
Carmen	Chan	27
Martin	Chatrou	16, 17

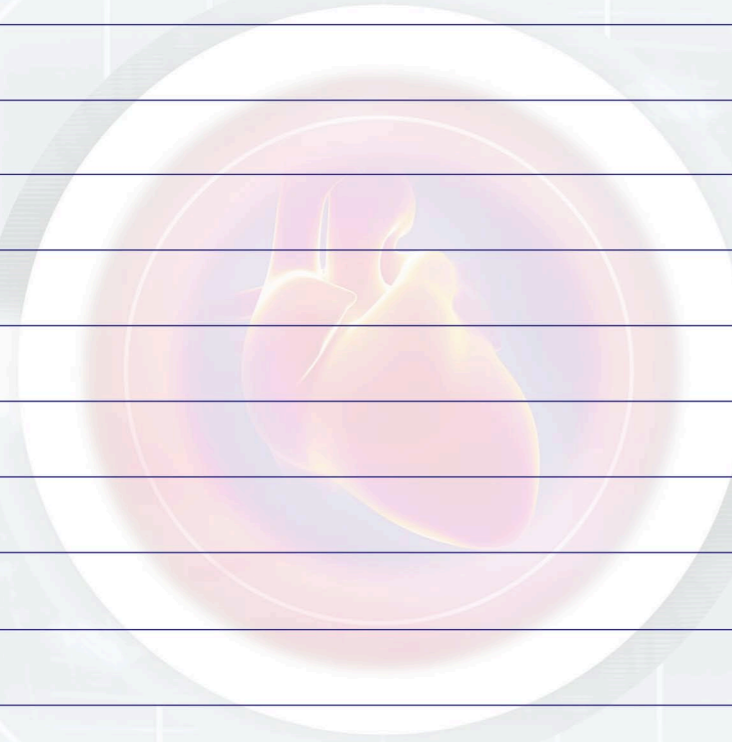
Hemant	Chaturvedi	55
Amedeo	Chiribiri	19
Carmelo	Ciccio	56
Carla	Contaldi	51
Domenico	Corrado	32
Bernard	Cosyns	30
Ibolya	Csecs	31
Veronica	Culotta	46
Csilla	Czibalmos	56
Erica	Dall'Armellina	24
Daniele	De Falco Alfano	49, 51
Estefania	De Garate	42, 46, 53
Juliano	De Lara Fernandes	16,
Manuel	De Lazzari	45, 46
Victoria	Delgado	30
Santo	Dellegrottaglie	25
Aparna	Deshpande	56
Dan	Devos	38
Daniela	Di Lisi	45
Laura	Dobson	51
Franz	Duca	22, 50
Lydia	Dux-Santoy	38
Anastasiya	Efimova	56
Ingo	Eitel	23
Abdalla	El Agha	27, 46, 55
Sara	El Fawal	51
Mohammed S.M.	Elbaz	17, 53
Eman	ElSharkawy	56
Tamas	Erdei	46, 50, 55
Iris	Esteve-Ruiz	55
Hans-Josef	Feistritzer	49, 50
Graham	Fent	38, 49
Covadonga	Fernandez-Golfin	27
Vanessa	Ferreira	17,
Patricia	Feuchter	23
Anca Rezeda	Florian	31
James	Foley	52
Jean-Francois	Fontaine	31
Marianna	Fontana	17,
Marco	Francone	16,
Michael	Frick	51
Yaron	Fridman	22
Silke	Friedrich	16, 17,
Matthias	Friedrich	16, 24, 26
Stephanie	Funk	41
Oliver	Gaemperli	32
Pankaj	Garg	31, 41, 50
Sabiha	Gati	46
Rolf	Gebker	16,
Bernhard	Gerber	30, 32
Amardeep	Ghosh Dastidar	41, 42, 53
Thomas	Gibbs	52
Giuseppe	Gibelli	49
Sigita	Glaveckaite	33
Kaatje	Goetschalckx	25
Marco	Gotte	18,
Julie	Grapsa	30
John	Greenwood	26, 30
Simon	Greulich	37
Chrysanthos	Grigoratos	42, 46, 49
Lars	Grosse-Wortmann	19, 24
Andrea Igoren	Guaricci	25
Sara	Guerreiro	56
Matthias	Gutberlet	23
Maciej	Haberka	52
Gilbert	Habib	22
Tarik	Hafyane	31
Basma	Hammad	46
David	Hautemann	16, 17
Siri Lagethon	Heck	52
Einar	Heiberg	17,
Sebastian	Hilbert	25
Mark	Hill	24
Rocio	Hinojar	53
Seiko	IDE	22
Begona	Igual Munoz	50, 51, 52

Akio Inage	50
Stephanie James	25
Martin Janich	26
Alexandros Kallifatidis	41
Andreas Kammerlander	37, 52
Vivian Kamphuis	38, 51
Katarzyna Katulska	52
Niall Keenan	16
Peter Kellman	17,
Josephine Kermer	52
Mohammed Khanji	25
Philip Kilner	17, 24, 26, 27
Sari Kivisto	33
Gert Klug	51
Radka Kockova	42
Shimon Kolker	41
Rebecca Kozor	42
Ricardo Ladeiras-Lopes	49
Zeeshan Lakhani	23, 45, 49
Tomas Lapinskas	49, 56
Thu Thao Le	53
Krista Lesina	56
Boyang Liu	38
Massimo Lombardi	16
Amrit Lota	31, 46
Francesca Macaione	41
Alicia Maceira	22, 30
Viviana Maestrini	25, 27
Fabio Magliulo	55
Ahmed A. Mahmoud	50
Heiko Mahrholdt	25
Aleksandra Maksimova	51
Giovanni Malanchini	52
Lukasz Malek	30, 33
Robert Manka	25
Pier Giorgio Masci	16, 30, 31
Shona Matthew	52
Sofia Mavrogeni	22
Agnes Mayr	51
Elisa McAlindon	23, 53
Laura-Ann McGill	53
Christian Meierhofer	38
Antonella Meloni	51, 52
Katia Devorha Menacho Medina	31, 51
Constanze Merten	46, 53
Daniel Messroghli	17,
Naira Mkrtychyan	49
Olga Mochula	51
Monica Monaghan	45
Francois-Pierre Mongeon	52
James Moon	22, 26
Manish Motwani	18, 30
Vivek Muthurangu	19, 24
Eike Nagel	24
Helena Nascimento	56
Luigi Natale	16, 23
Sheraz Nazir	37, 42, 53
Ineke Nederend	38
Koen Nieman	30
Alice Niero	33
Robin Nijveldt	32
Evangelia Nyktari	45, 49
Sabrina Oebel	38, 42
Luca Olivotti	31
Jacopo Olivotto	32
Carmen Olmos	33
Hind Ougnou	27
Joao Pais	51, 53
Tomas Palecek	33
Theano Papavassiliu	51
Jean-François Paul	26
Gianni Pedrizzetti	17,
Patrizia Pedrotti	23, 42
Dudley Pennell	22, 26
Alessia Pepe	24, 25, 37, 42
Martina Perazzolo Marra	27

Steffen Petersen	30
Filippo Piatti	53
Silvia Pica	33, 55
Stefan Piechnik	16
Pedro Pinto-Teixeira	56
Sven Plein	22
Francesca Pluchinotta	19
Tomaz Podlesnikar	56
Gianluca Pontone	18, 25, 30, 42
Oana-Andreea Popa	33
Francesca Pugliese	30
Valentina Puntmann	26
Carlo Quattrocchi	24
Alejandro Quijada-Fumero	55
Frank Rademakers	22
Francesco Radico	56, 56
Francesca Raimondi	22
Anna Reid	25
Martin Reindl	49
Sebastian Johannes Reinstadler	25, 49
Kawal Rhode	32
Fabrizio Ricci	37
Caroline Richmond	51
Jonathan Rodrigues	18, 23, 31, 49, 50
Jose Rodrigues Palomares	16
Alberto Roghi	30
Stefania Rosmini	38, 56
Clotilde Roy	52
Beate Ruecker	38
Tobias Rutz	19, 41, 45
Komal Safdar	41
Laura Saunders	52
Aatif Sayeed	37
Alessandra Scatteia	31, 52, 53, 56
Eric Schelbert	17,
Silvia Schievano	24
Christopher Schneeweis	52
Rebecca Schofield	46, 55
Jeanette Schulz-Menger	24, 26
Jürg Schwitter	18, 19, 22
Sanjay Sharma	32
Hoi Lam Helen She	50
Nerejda Shehu	51
Lon Simonetti	22
Alison Smyth	56
Ana Beatriz Solana	53
Aida Soufiani	56
Alexandra Sousa	50
Angela Susana	25, 38, 50, 55
Peter Swoboda	42, 49
Juan Sztajzel	51, 56
Kaoru Tanaka	53
Oliver Tann	23
Upasana Tayal	41
Albert Teis	50
Antonia Tercero	50
Holger Thiele	22, 23, 32
Thomas Treibel	22, 53
Martin Ugander	16, 25
Filipa Valente	23, 41, 53
Maddalena Valinoti	49
Emanuela Valsangiacomo	19
Harrie Van den Bosch	51
Albert van Rossum	18
Giulia Vinco	51
Maximilian von Roeder	50
Jessica Webb	51
Jonathan Weir-McCall	49
Jos Westenberg	16,
Mark Westwood	30
Michiel Winter	23, 51
Kerstin Wustmann	23
Wisam Yassi	55
Chun-Ho Yun	51
Alwin Zweerink	31

NOTES

EUROCMR
2016



15TH ANNUAL MEETING ON CMR OF THE EUROPEAN ASSOCIATION OF CARDIOVASCULAR IMAGING

EuroCMR 2017

Current Clinical Application of CMR

25-27 May

Prague

Czech Republic



www.escardio.org/EACVI



EUROPEAN ASSOCIATION OF CARDIOVASCULAR IMAGING (EACVI)

DISCOVER OUR



MEMBERSHIP OFFER

E-LEARNING PLATFORM

SCIENTIFIC PRODUCTS

JOURNAL

CONGRESSES & COURSES

HEART IMAGERS OF TOMORROW

INTERNATIONAL NETWORK

MEMBERS GET SPECIAL BENEFITS AND DISCOUNTS

VISIT THE EACVI STAND

SPECIAL OFFER!
2016 Membership for only 60€*

www.escardio.org/EACVI



EACVI
EUROPEAN ASSOCIATION OF
CARDIOVASCULAR
IMAGING
A Registered Branch of the ESC



**EUROPEAN
SOCIETY OF
CARDIOLOGY®**

* This offer applies to the Silver level and is restricted to EuroCMR 2016 paying delegates.
Offer valid from 12/05/16 to 14/05/16 onsite only.